

Product Catalog 2014



www.PyramidCarAudio.com



2014 Product Catalog

www.PyramidCarAudio.com

Home Amplifiers	2
Speaker Cabinets	3
Guitar Amplifiers	4
Power Supply	5
Subwoofers	7
Subwoofer Enclosures	11
Amplifiers	12
Speakers	13
Bookcase Speakers	14
Waterproof Speakers	15
Tweeters	16
Noise Suppressors	21
Cables/Wiring	22
Speaker Grills - Antennas	25

Pyramid Car Audio is a family-owned business that has been in the field for almost three decades now. Early on we developed a notion of how to bring affordable audio products to the US market. We realized that, by working with the best manufacturers and demanding the highest standards, we could make it happen.

At Pyramid, we pride ourselves as being the most affordable solution to car audio. With this constant vision in mind, it took only a few short years before Pyramid was considered the world wide leader in affordable audio products. We continue today with the same goal and notion in mind to provide our valued world wide consumers with the most competitive product for their dollar.

Our family is pleased to extend our services to you on the web. We know that our products will meet all of your audio needs, but if for any reason you are not satisfied, call us at 1-(718) 236-8000 or e-mail us. We value you as a Pyramid customer. Thank you.



ZPA100 1000 Watts Stereo Powered Amplifier

- LED Output Level Meters
- Dual Output Level Controls
- Heavy Duty Fan Cooling
- Signal LED Indicator
- Clip Circuitry w/LED Indicator
- Protection Circuitry w/ LED Indicator
- Stereo/Mono Selector
- 1/4" & XLR Inputs
- Binding Post Speaker Connections SPEAKON Outputs
- Switched AC Accessory Outlet
- THD: 1% at Rated Output Power
- Frequency Response: 20 Hz-20 kHz
- S/N Ratio: 102 dB
- Input level:+4dB
- 115/230 Voltage Selector
- Dimensions: 19"W x 13.6"D x 4.3"H



ZPA150 1500 Watts Stereo Powered Amplifier

- LED Output Level Meters
- Dual Output Level Controls
- Heavy Duty Fan Cooling
- Signal LED Indicator
- Clip Circuitry w/LED Indicator
- Protection Circuitry w/ LED Indicator
- Stereo/Mono Selector
- 1/4" & XLR Inputs
- Binding Post Speaker Connections SPEAKON Outputs
- Switched AC Accessory Outlet
- THD: 1% at Rated Output Power
- Frequency Response: 20 Hz-20 kHz
- S/N Ratio: 102 dB
- Input level:+4dB
- 115/230 Voltage Selector
- Dimensions: 19"W x 13.6"D x 4.3"H



PA305 300 Watt PA Amplifier - 70V Output & Mic Talkover

- Sound Reinforcement Amplifier
- 100 Watts RMS 300 Watts Peak Output
- Front 3.5mm AUX CD Input Jack
- MIC 1 Talkover
- PHONO/MIC 4 Input Selector
- Phono RCA Inputs
- THD Better Than 0.05%
- Controls Volume Up To 4 Microphones
- Controls Vol./Balance of Phono/CD/Aux
- Master Output Level Control
- Rotary Feedback Filter
- Lighted VU Meter
- Four 1/4" & XLR Phone Jacks
- EQ Input/Output Jacks with Bypass
- Mix Bus Input Jack Connects To Another System
- Clipping and Protection LEDs
- 4, 8, 16 ohms & 70 Volt Speaker Outputs
- 110/220 Voltage Selector
- Heavy Duty Aluminum Heatsinks
- Rack Mountable w/ Handles
- Power On/Off Switch w/LED Indicator
- Outputs for 1 or More 4, 8 or 16 Ohm Speakers
- For Use w/all Mixers, PA Equipment, Home Audio
- Dimensions: 19"W x 4.9"H x 11.94"D



PA205 120 Watt Microphone PA Amplifier w/70V Output "& Mic Talkover

- 40w Mono 10% RMS at 8 Ohms
- Power On/Off w/LED Indicator
- 1/4" Phone Jack
- LED Level Display
- Master Volume Control
- Front 3.5mm AUX CD Input Jack
- MIC 1 Talkover
- High/Mid/Low Tone Controls
- Phono/Aux Volume Control
- Mic 1 & Mic 2 Volume Controls
- Mic 1 & Mic 2 6.35mm Connectors
- Voltage Selector 110/220V
- Removable AC Cord
- Unswitched AC Outlet
- Phono & Aux RCA Input Jacks
- Phono/Aux Input Selector
- 4, 8, 16 ohms & 70 Volt Speaker Outputs
- Mix Bus Jacks
- Dimensions: 3 1/3" x 12 3/4" x 8 9/10"
- Weight: 3.92kgs



PA305 300 Watt PA Amplifier - 70V Output & Mic Talkover

- Sound Reinforcement Amplifier
- 100 Watts RMS 300 Watts Peak Output
- Front 3.5mm AUX CD Input Jack
- MIC 1 Talkover
- PHONO/MIC 4 Input Selector
- Phono RCA Inputs
- THD Better Than 0.05%
- Controls Volume Up To 4 Microphones
- Controls Vol./Balance of Phono/CD/Aux
- Master Output Level Control
- Rotary Feedback Filter
- Lighted VU Meter
- Four 1/4" & XLR Phone Jacks
- EQ Input/Output Jacks with Bypass
- Mix Bus Input Jack Connects To Another System
- Clipping and Protection LEDs
- 4, 8, 16 ohms & 70 Volt Speaker Outputs
- 110/220 Voltage Selector
- Heavy Duty Aluminum Heatsinks
- Rack Mountable w/ Handles
- Power On/Off Switch w/LED Indicator
- Outputs for 1 or More 4, 8 or 16 Ohm Speakers
- For Use w/all Mixers, PA Equipment, Home Audio
- Dimensions: 19"W x 4.9"H x 11.94"D





PR2500 Stereo Control Pre-Amplifiers

- Power On/Off Switch w/LED Indicator
- Microphone Input Jack
- Microphone Level Control
- Bass/Midrange/Treble/Loudness/Balance Control
- Master Volume Control
- Low Frequency Filter
- Stereo/Mono Switch
- Tape PLAY and REC Output RCA Jacks
- Muting Switch
- Input Source Selector
- Tuner/CD/Aux/Phono Input RCA Jacks
- Tape Monitor Switch
- 110/220 Voltage Switchable
- Rack Mount Design
- Dimensions: 19"W x 2.375"H x 8.5"D



PM4800SFX 4 Channel Rack Mount Stereo Dj Mixer W/ Sound Effects

- 3 Channel Mixer
- LED Level Meter
- Power On/Off Switch w/LED Indicator
- Separate Bass/Treble Tone Control
- Master Level Control
- Assignable Cue/Monitor w/Level Control
- Level Control for Built in Sound Effects: Emergency,Tron,Machine Gun, UFO,Laser, Siren
- Phono/Line Selector
- Mic 2 Hi/Low Impedance Selector
- DJ Mic 1 Talkover Switch
- Fader Control
- 1/4" Mic Input
- CD Ready
- Input: 4 Line, 2 Phono
- Output: 1 Amp, 1 Rec
- Rack Mountable
- Frequency Response: 20Hz-20kHz
- S/N Ratio >60db
- THD<0.05%
- Dimensions: 15"W x 6.75"D x 3"H



PMBH839 200 Watt 2-Way 8" Speaker Cabinet

- Heavy Duty Construction w/Reinforced Corners
- Dual Tone Carpeted Finish
- Two Way Speaker System
- Each PMBH839 Contains: One 4" x 10" Dispersion Horn Mid/Tweeter One 8" High Power Subwoofer
- Steel Waffle Grill Protects Woofer
- Quick Connect Speaker Terminals
- Strap Handle for Easy Portability
- Two 1/4" Phono Jacks
- Dual Ports for Added Bass Response
- Built-in Crossover Network
- Power Handling: 100 Watts RMS/200 Watts Peak
- Frequency Response: 60-19k Hz
- Sensitivity: 92dB
- Impedance: 8 Ohms
- Dimensions: 13.5"W x 9"D x 19"H



PMBH1039 300 Watt 2-Way 10" Speaker Cabinet

- Heavy Duty Construction w/Reinforced Corners
- Dual Tone Carpeted Finish
- Two Way Speaker System
- Each PMBH1039 Contains: One 4" x 10" Dispersion Horn Mid/Tweeter One 10" High Power Subwoofer
- Steel Waffle Grill Protects Woofer
- Quick Connect Speaker Terminals
- Pocket Handles for Easy Portability
- Two 1/4" Phono Jacks
- Shock Absorbent Legs
- Dual Ports for Added Bass Response
- Built-in Crossover Network

PMBH1239 400 Watt 2-Way 12" Speaker Cabinet

- Heavy Duty Construction w/Reinforced Corners
- Dual Tone Carpeted Finish
- Two Way Speaker System
- Each PMBH1239 Contains: One 4" x 10" Dispersion Horn Mid/Tweeter One 12" High Power Subwoofer
- Steel Waffle Grill Protects Woofer
- Quick Connect Speaker Terminals
- Pocket Handles for Easy Portability
- Two 1/4" Phono Jacks
- Shock Absorbent Legs
- Dual Ports for Added Bass Response
- Built-in Crossover Network

PMBH1539 400 Watt 2-Way 15" Speaker Cabinet

- Heavy Duty Construction w/Reinforced Corners
- Dual Tone Carpeted Finish
- Two Way Speaker System
- Each PMBH1539 Contains: One 4" x 10" Dispersion Horn Mid/Tweeter One 15" High Power Subwoofer
- Steel Waffle Grill Protects Woofer
- Quick Connect Speaker Terminals
- Pocket Handles for Easy Portability
- Two 1/4" Phono Jacks
- Shock Absorbent Legs
- Dual Ports for Added Bass Response
- Built-in Crossover Network

PMBH15 800 Watt 7-Way 15" Speaker Cabinet

- Heavy Duty Construction w/Reinforced Corners
- Dual Tone Carpeted Finish
- 7 Way Speaker System
- Each PMBH15 Contains: One 4" x 10" Super Horn Midrange/Tweeter Three Piezo Horn Tweeters One 15" Subwoofer, Kapton VC, Made in USA
- Two Heavy Duty Handles for Easy Portability
- Quick Connect Speaker Terminals
- Dual 1/4" Phono Jacks
- Heavy Duty Caster Wheels
- Dual Ports for Added Bass Response
- Built in Crossover Network
- Power Handling: 400 Watts RMS/800 Watts Peak
- Frequency Response: 40-20kHz



GA210 250 Watts High Quality Guitar Amplifier

- High Quality Guitar Amplifier
- Heavy Duty Wood Construction
- 40 Watts RMS
- 250 Watts Peak
- 6.5" Speaker
- Volume, Bass, Treble Controls
- Bass Expander Circuit;
- 1/4" Phone Jack Input
- 1/4" Headphone Jack
- 1/4" Line Out
- Carry Handle
- Power On/Off Switch with LED Indicator
- AC 110/220 Voltage Switchable
- Dimensions: 9 4/7" W x 10 1/5" H x 6 1/5" D
- Weight: 9.37LBS



GA410 400 Watts High Quality Guitar Amplifier

- Heavy Duty Wood Construction
- 60 Watts RMS/400 Watts Peak
- 8" High Definition Speaker
- Volume, Bass, Mid and Treble Controls
- 1/4" Phone Jack Input
- 1/4" Headphone Jack
- 1/4" Line Out
- Carry Handle
- Power On/Off Switch w/LED Indicator
- AC 110/220 Voltage Switchable
- Dimensions: 13"W x 16"H x 9.4"D
- Weight: 18.3 lbs



GA610 600 Watts Dual Channel Guitar Amplifier

- Heavy Duty Wood Construction
- 70 Watts RMS/600 Watts Peak
- 8" High Definition Speaker
- Reverb/Distortion Effect
- Effects Loop Send/Return
- Volume, Bass, Mid and Treble Controls
- 1/4" Phone Jack Input
- 1/4" Headphone Jack
- 1/4" Line Out
- Carry Handle
- Footswitch Jack for Reverb Switching
- Power On/Off Switch w/LED Indicator
- AC 110/220 Voltage Switchable
- Dimensions: 16.2"W x 18.75"H x 11"D
- Weight: 30.9 lbs



PSV40 Fully Regulated Low Ripple 3-Amp Switching DC Power Supply

- Lighted on/off switch
- Overheating protection
- Convenient cigarette lighter plug lets you power Anything that will run off a 12V Car cigarette lighter
- Red/Black terminal post
- Switching Power Supply
- Outputs: 13.8V DC at up to 3 Amps Continuous
- Dimensions: 5.32"W x 1.93"H x 5.12"D



PSV200 Heavy-Duty 20-Amp Switching DC Power Supply

- Lighted On/Off Switch
- Overheating Protection
- Cooling and Fan Control
- Red/Black Terminal Post
- Switching Power Supply
- Outputs: 13.8VDC At Up To 20 Amps Continuous
- Dimensions: 7.28" x 2.08" x 7.48" (WxHxD)



PSV300 Fully Regulated Low Ripple 30-Amp Switching DC Power Supply

- Lighted On/Off Switch
- Overheating Protection
- Cooling and Fan Control
- Red/Black Terminal Post
- Switching Power Supply
- Outputs: 13.8VDC At Up To 30 Amps Continuous
- Dimensions: 8.5" x 2.625" x 8.25" (WxHxD)





PS3KX 2.5 Amp Power Supply

- Perfect for Home, Shop and Hobbyist
- Input: 115V AC, 60Hz, 50 Watts
- Output: 13.8V DC
- 2.5 AMP Constant/3 AMP Surge
- Powers Cell Phones, 12V DC CB Radios, Scanners, etc.
- Screw Terminal Connectors
- Electronic Overload Protection w/ Auto Reset
- Short Circuit Protection
- Fuse Protected
- Linear Power Supply
- Heavy Duty Cabinet & Heatsink with Anti-Skid Rubber Feet
- Dimensions: 7.48"L x 4.92"W x 3"H



PS4KX 3 Amp Power Supply

- Perfect for Home, Shop and Hobbyist
- Input: 115V AC, 60Hz, 50 Watts
- Output: 13.8V DC
- 3 AMP Constant/4 AMP Surge
- Powers Cell Phones, 12V DC CB Radios, Scanners, etc.
- Screw Terminal Connectors
- Electronic Overload Protection w/ Auto Reset
- Short Circuit Protection
- Fuse Protected
- Linear Power Supply
- Heavy Duty Cabinet & Heatsink with Anti-Skid Rubber Feet
- Dimensions: 7.48"L x 4.92"W x 3"H



PS7KX 5 Amp Power Supply

- Perfect for Home, Shop and Hobbyist
- Input: 115V AC, 60Hz, 70 Watts
- Output: 13.8V DC
- 5 AMP Constant/7 AMP Surge
- Powers Cell Phones, 12V DC CB Radios, Scanners, etc.
- Screw Terminal Connectors
- Electronic Overload Protection w/ Auto Reset
- Short Circuit & Thermal Protection
- Fuse Protected
- Linear Power Supply
- Heavy Duty Cabinet & Heatsink with Anti-Skid Rubber Feet
- Dimensions: 7.48"L x 4.92"W x 3"H



PS8KX 6 Amp Power Supply

- Perfect for Home, Shop and Hobbyist
- Input: 115V AC, 60Hz, 100 Watts
- Output: 13.8V DC
- 6 AMP Constant/8 AMP Surge
- Powers Cell Phones, 12V DC CB Radios, Scanners, etc.
- Screw Terminal Connectors
- Electronic Overload Protection w/ Auto Reset
- Short Circuit Thermal Protection
- Fuse Protected
- Linear Power Supply
- Heavy Duty Cabinet Heatsink w/ Anti-Skid Rubber Feet
- Dimensions: 7.48"L x 4.92"W x 3"H



PS9KX 5 Amp Power Supply w/ Cigarette Lighter Plug

- Perfect for Home, Shop and Hobbyist
- Input: 115V AC, 60Hz, 70 Watts
- Output: 13.8V DC
- 5 AMP Constant/7 AMP Surge
- Convenient Cigarette Lighter Plug lets you power ANYTHING that will run off a 12V car cigarette lighter.
- Screw Terminal Connectors
- Powers Cellular Phones, 12V DC CB Radios, Scanners, etc.
- Electronic Overload Protection w/ Auto Reset
- Short Circuit & Thermal Overload Protection
- Fuse Protected
- Linear Power Supply
- Heavy Duty Cabinet & Heatsink with Anti-Skid Rubber Feet
- Dimensions: 7.48"L x 4.92"W x 3"H



PS12KX 10 Amp Power Supply

- Perfect for Home, Shop and Hobbyist
- Input: 115V AC, 60Hz, 250 Watts
- Output: 13.8V DC
- 10 AMP Constant/12 AMP Surge
- Powers Cellular Phones, 12V DC CB Radios, Scanners, HAM Radios, Autosound Systems
- Screw Terminal Connectors
- Electronic Overload Protection w/ Auto Reset
- Short Circuit & Thermal Protection
- Fuse Protected
- Linear Power Supply
- LED Condition Indicators
- Heavy Duty Cabinet & Heatsink with Anti-Skid Rubber Feet
- Dimensions: 7.87"L x 7.16"W x 4.72"H



PS14KX 12 Amp Power Supply

- Perfect for Home, Shop and Hobbyist
- Input: 115V AC, 60Hz, 270 Watts
- Output: 13.8V DC
- 12 AMP Constant/14 AMP Surge
- Powers Cellular Phones, 12V DC CB Radios, Scanners, HAM Radios, Autosound Systems
- Screw Terminal Connectors
- Electronic Overload Protection w/ Auto Reset
- Short Circuit Thermal Protection
- Fuse Protected
- Linear Power Supply
- LED Condition Indicators
- Heavy Duty Cabinet Heatsink with Anti-Skid Rubber Feet
- 3 Prong Grounded AC Plug
- Dimensions: 7.87"L x 7.16"W x 4.72"H



PS15K 10 Amp Power Supply w/Cigarette Lighter Plug

- Perfect for Home, Shop and Hobbyist
- Input: 115V AC, 60Hz, 250 Watts
- Output: 13.8V DC
- 10 AMP Constant/12 AMP Surge
- Powers Cellular Phones, 12V DC CB Radios, Scanners, HAM Radios, Autosound Systems, etc.
- Screw Terminal Connectors
- Short Circuit Thermal Protection
- Convenient Cigarette Lighter Plug lets you power ANYTHING that will run off a 12V car cigarette lighter.
- Electronic Overload Protection w/ Auto Reset
- Fuse Protected
- LED Condition Indicators
- Heavy Duty Cabinet Heatsink with Anti-Skid Rubber Feet
- 3 Prong Grounded AC Plug
- Dimensions: 7.87"L x 7.16"W x 4.72"H



PS21KX 20 Amp Power Supply

- Perfect for Home, Shop and Hobbyist
- Input: 115V AC, 60Hz, 450 Watts
- Output: 13.8V DC
- 18 AMP Constant/20 AMP Surge
- Powers Cellular Phones, 12V DC CB Radios, Scanners, HAM Radios, Autosound Systems, etc.
- Screw Terminal Connectors
- Crowbar Over-Voltage Protection
- Electronic Overload Protection w/Auto Reset
- Short Circuit Thermal Protection
- Fuse Protected
- Linear Power Supply
- LED Condition Indicators
- Built-in Cooling Fan
- Heavy Duty Cabinet Heatsink with Anti-Skid Rubber Feet
- 3 Prong Grounded AC Plug
- Dimensions: 11.81"L x 9.05"W x 4.92"H



PS26KX 22 Amp Power Supply

- Perfect for Home, Shop and Hobbyist
- Built-in Cooling Fan
- Input: 115V AC, 60Hz, 500 Watts
- Output: 6-15V DC (Adjustable)
- 22 AMP Constant/25 AMP Surge
- Powers 6-15V DC Devices such as Cellular Phones, CB Radios, Scanners, HAM Radios, Autosound Systems, etc.
- Screw Terminal Connectors
- Crowbar Over Voltage Protection
- Short Circuit & Thermal Protection
- Fuse Protected
- Linear Power Supply
- LED Condition Indicators
- 3 Prong Grounded AC Plug
- Heavy Duty Cabinet & Heatsink with Anti-Skid Rubber Feet
- Electronic Overload Protection w/Auto Reset
- Dimensions: 11.81"L x 9.05"W x 7.08"H





PS36KX 32 Amp Adjustable Power Supply

- Perfect for Home, Shop and Hobbyist
- Built-in Cooling Fan
- Input: 115V AC, 60Hz, 600 Watts
- Output: 12-15V DC(Adjustable)
- 32 AMP Constant/35 AMP Surge
- Powers 12V DC Devices such as Cellular Phones, CB Radios, Scanners, HAM Radios, Autosound Systems, etc.
- Screw Terminal Connectors
- Crowbar Over Voltage Protection
- Short Circuit & Thermal Protection
- Fuse Protected
- Linear Power Supply
- LED Protection Indicators
- 3 Prong Grounded AC Plug
- Heavy Duty Cabinet & Heatsink with Non-Skid Rubber Feet
- Dimensions: 14"L x 9.17"W x 4.92"H



PS52KX 46 Amp Power Supply

- Perfect for Home, Shop and Hobbyist
- Built-in Cooling Fan
- Input: 115V AC, 60Hz, 1000 Watts
- Output: 12-15V DC(Adjustable)
- 46 AMP Constant/52 AMP Surge
- Powers 12V DC Devices such as Cellular Phones, CB Radios, Scanners, Ham Radios, Autosound Systems, etc.
- Screw Terminal Connectors
- Crowbar Over Voltage Protection
- Short Circuit Thermal Protection
- Fuse Protected
- Linear Power Supply
- LED Condition Indicators
- 3 Prong Grounded AC Plug
- Heavy Duty Rack Mountable Cabinet Heatsink
- Electronic Overload Protection w/Auto Reset
- Dimensions: 12"L x 19"W x 4.5"H



PW577X 5" 200 Watt Subwoofer

- New Design Injection-Molded P.P. Cone
- Specially Treated Black Rubber Edge Suspension
- Chrome Finish Basket
- Bumped & Vented Yoke Plate For Extended Excursion
- Silver Plated Terminal
- Rubber Magnet Boot For Better Protection
- 1" High Temperature Kapton Voice Coil
- Impedance: 4 Ohm
- 100 Watts RMS/200 Watts Peak
- Overall Diameter: 5.17"
- SPL @ 1W/1M: 87dB
- Magnet Weight: 20 oz.
- Mounting Depth: 2.17"



PW677X 6" 300 Watt Subwoofer

- New Design Injection-Molded P.P. Cone
- Specially Treated Black Rubber Edge Suspension
- Chrome Finish Basket
- Bumped & Vented Yoke Plate For Extended Excursion
- Silver Plated Terminal
- Rubber Magnet Boot For Better Protection
- 1" High Temperature Kapton Voice Coil
- Impedance: 4 Ohm
- 150 Watts RMS/300 Watts Peak
- Overall Diameter: 6.50"
- SPL @ 1W/1M: 86dB
- Magnet Weight: 40 oz.
- Mounting Depth: 2.89"



PW877X 8" 400 Watt Subwoofer

- New Design Injection-Molded P.P. Cone
- Specially Treated Black Rubber Edge Suspension
- Chrome Finish Basket
- Bumped & Vented Yoke Plate For Extended Excursion
- Silver Plated Terminal
- Rubber Magnet Boot For Better Protection
- 1.5" High Temperature Kapton Voice Coil
- Impedance: 4 Ohm
- 200 Watts RMS/400 Watts Peak
- Overall Diameter: 8.27"
- SPL @ 1W/1M: 89dB
- Magnet Weight: 60 oz.
- Mounting Depth: 3.54"



PW1077X 10" 600 Watt Subwoofer

- New Design Injection-Molded P.P. Cone
- Specially Treated Black Rubber Edge Suspension
- Chrome Finish basket
- Bumped & Vented Yoke Plate for Extended Excursion
- Silver Terminal
- Rubber magnet Boot for Better Protection
- 2.0" High Temperature Voice Coil
- Impedance: 4 Ohm
- 300 Watts RMS/600 Watts Peak
- Overall Diameter: 10.08"
- SPL @ 1W/1M: 88dB
- Magnet Weight: 80 Oz
- Mounting Depth: 4.33"



PW1277X 12" 700 Watt Subwoofer

- New Design Injection-Molded P.P. Cone
- Specially Treated Black Rubber Edge Suspension
- Chrome Finish Basket
- Bumped & Vented Yoke Plate For Extended Excursion
- Silver Plated Terminal
- Rubber Magnet Boot For Better Protection
- 2" High Temperature Kapton Voice Coil
- Impedance: 4 Ohm
- 350 Watts RMS/700 Watts Peak
- Overall Diameter: 12.17"
- SPL @ 1W/1M: 88dB
- Magnet Weight: 80 oz.
- Mounting Depth: 4.96"



PW1086X 10" 800 Watts Subwoofer

- Non-Pressed Paper Cone
- Wide Foam Rubber Surround
- Rigid Powder Coated Stamped Steel Basket
- Bumped & Vented Pole Piece
- Rubber Gasket & Rubber Magnet Boot
- 2" 4 Layer Kapton Voice Coil
- 4 Ohm Impedance
- 400 Watts RMS/800 Watts Peak
- Overall Diameter: 10.67"
- SPL @ 1W/1M: 86.4dB
- 90 oz. Magnet Structure
- Mounting Depth: 4.57"



PW1286X 12" 1000 Watts Subwoofer

- New Pattern Strong Black Paper Cone
- Wide Heavy Foam Surround
- Rigid Powder Coated Stamped Steel Basket
- Bumped & Vented Pole Piece With Rubber Gasket & Rubber Magnet Boot
- 2" 4 Layer Kapton Voice Coil
- 4 Ohm Impedance
- 500 Watts RMS/1000 Watts Peak
- Overall Diameter: 12.52"
- SPL @ 1W/1M: 86.1dB
- Magnet Weight: 90 oz.
- Mounting Depth: 5.16"



PW1586X 15" 1200 Watts Subwoofer

- New Pattern Strong Black Paper Cone
- Wide Heavy Foam Surround
- Rigid Powder Coated Stamped Steel Basket
- Bumped & Vented Pole Piece With Rubber Gasket & Rubber Magnet Boot
- 2.5" 4 Layer Kapton Voice Coil
- 4 Ohm Impedance
- 600 Watts RMS/1200 Watts Peak
- Overall Diameter: 15.47"
- SPL @ 1W/1M: 89.5dB
- Magnet Weight: 110 oz.
- Mounting Depth: 6.14"



PW848USX 8" 350 Watt High Performance 8 Ohm Subwoofer

- Black Strong Non-Pressed Paper Cone
- Non-Fatiguing Rubber Suspension
- Stamped Steel Basket
- Bumped & Vented Motor Structure
- 1.5" High Temperature Kapton Voice Coil
- 8 Ohms Impedance
- 175 Watts RMS/350 Watts Peak
- Overall Diameter: 8.23"
- SPL @ 1W/1M: 87.7dB
- Magnet Weight: 50 oz.
- Mounting Depth: 3.50"





PW855USX 8" 350 Watt Subwoofer

- Poly-Coated Paper Cone
 - Non Fatiguing Rubber Suspension
 - Stamped Steel Basket w/Golden Terminal
 - Bumped & Vented Motor Structure
 - 1.5" High Temperature Kapton Voice Coil
 - Heavy Magnt Structure
 - 4 Ohm Impedance
- Impedance: 4 Ohm
 - 175 Watts RMS/350 Watts Peak
 - Overall Diameter: 8.23"
 - SPL @ 1W/1M: 88.3dB
 - Magnet Weight: 50 oz.
 - Mounting Depth: 3.50"



PW1048USX 10" 500 Watt High Performance 8 Ohm Subwoofer

- Black Strong Non-Pressed Paper Cone
 - Non-Fatiguing Rubber Suspension
 - Stamped Steel Basket
 - Bumped & Vented Motor Structure
 - 2" High Temperature Kapton Voice Coil
 - 8 Ohms Impedance
- 250 Watts RMS/500 Watts Peak
 - Overall Diameter: 10.20"
 - SPL @ 1W/1M: 85.6dB
 - Magnet Weight: 60 oz.
 - Mounting Depth: 4.21"



PW1248USX 12" 500 Watt High Performance 8 Ohm Subwoofer

- Black Strong Non-Pressed Paper Cone
 - Non-Fatiguing Rubber Suspension
 - Stamped Steel Basket
 - Bumped & Vented Motor Structure
 - 2" High Temperature Kapton Voice Coil
 - 8 Ohms Impedance
- 250 Watts RMS/500 Watts Peak
 - Overall Diameter: 12.28"
 - SPL @ 1W/1M: 89dB
 - Magnet Weight: 60 oz.
 - Mounting Depth: 5"



PW1055USX 10" 500 Watt Subwoofer

- Poly-Coated Paper Cone
 - Non Fatiguing Rubber Suspension
 - Stamped Steel Basket w/Golden Terminal
 - Bumped & Vented Motor Structure
 - 2" High Temperature Kapton Voice Coil
 - Heavy Magnt Structure
 - 4 Ohm Impedance
- Impedance: 4 Ohm
 - 250 Watts RMS/500 Watts Peak
 - Overall Diameter: 10.20"
 - SPL @ 1W/1M: 86.3dB
 - Magnet Weight: 60 oz.
 - Mounting Depth: 4.21"



PW1255USX 12" 500 Watt Subwoofer

- Poly-Coated Paper Cone
 - Non Fatiguing Rubber Suspension
 - Stamped Steel Basket w/Golden Terminal
 - Bumped & Vented Motor Structure
 - 2" High Temperature Kapton Voice Coil
 - Heavy Magnt Structure
 - 4 Ohm Impedance
- Impedance: 4 Ohm
 - 250 Watts RMS/500 Watts Peak
 - Overall Diameter: 12.28"
 - SPL @ 1W/1M: 89.2dB
 - Magnet Weight: 60 oz.
 - Mounting Depth: 5"



WX65X 6.5" High Power White Injected P.P. Cone Woofer

- White Injected Polypropylene Cone
- Specially Treated Black Rubber Edge Suspension
- Vented Motor Structure
- 1.0" High Temperature Kapton Voice Coil
- Heavy Duty Magnet Structure
- Bumped Yoke Plate for Extended Excursion
- Impedance: 4 Ohm
- 150 Watts RMS/300 Watts Peak
- Overall Diameter: 6.57"
- SPL @ 1W/1M: 87.1 DB
- 40 Oz. Magnet Structure
- Mounting Depth: 2.76"



WX85X 8" 300 Watts High Power White Injected P.P. Cone Woofer

- White Injected Polypropylene Cone
- Specially Treated Black Rubber Edge Suspension
- Vented Motor Structure
- 1.5" High Temperature Kapton Voice Coil
- Heavy Duty Magnet Structure
- Bumped Yoke Plate For Extended Excursion
- Impedance: 4 Ohm
- 100 Watts RMS/300 Watts Peak
- Overall Diameter: 7.99"
- SPL @ 1W/1M: 87.7dB
- Magnet Weight: 50 oz.
- Mounting Depth: 3.31"

WX102X 10" High Power White Injected P.P. Cone Woofer

- White Injected Polypropylene Cone
- Specially Treated Black Rubber Edge Suspension
- Vented Motor Structure
- 1.5" High Temperature Kapton Voice Coil
- Heavy Duty Magnet Structure
- Bumped Yoke Plate for Extended Excursion
- Impedance: 4 Ohm
- 200 Watts RMA/400 Watts Peak
- Overall Diameter: 10.04"
- SPL @ 1W/1M: 88.1 DB
- 70 Oz. Magnet Structure
- Mounting Depth: 4.13

WX120X 12" High Power White Injected P.P. Cone Woofer

- White Injected Polypropylene Cone
- Specially Treated Black Rubber Edge Suspension
- Vented Motor Structure
- 1.5" High Temperature Kapton Voice Coil
- Heavy Duty Magnet Structure
- Bumped Yoke Plate for Extended Excursion
- Impedance: 4 Ohm
- 300 Watts RMS/600 Watts Peak
- Overall Diameter: 12.01"
- SPL @ 1W/1M: 87.5 DB
- 80 Oz. Magnet Structure
- Mounting Depth: 4.84"

WH8 8" 200 Watt High Power Paper Cone 8 Ohm Subwoofer

- Excellent Replacement Woofer For Sound & Music Reinforcement Systems
- Cloth Edge Suspension
- 25 oz. Magnet
- 1" Kapton Bobbin Voice Coil
- 8 Ohms Impedance
- Mounting Depth: 3.25"
- 100 Watts RMS/200 Watts Peak Power



WH10 10" 300 Watt High Power Paper Cone 8 Ohm Subwoofer

- Excellent Replacement Woofer For Sound & Music Reinforcement Systems
- Cloth Edge Suspension
- 25 oz. Magnet
- 1.5" Kapton Bobbin Voice Coil
- 8 Ohms Impedance
- Mounting Depth: 4"
- 150 Watts RMS/300 Watts Peak Power

WH12 12" 500 Watt High Power Paper Cone 8 Ohm Subwoofer

- Excellent Replacement Woofer For Sound & Music Reinforcement Systems
- Cloth Edge Suspension
- 25 oz. Magnet
- 1.5" Kapton Bobbin Voice Coil
- 8 Ohms Impedance
- Mounting Depth: 4.5"
- 250 Watts RMS/500 Watts Peak Power

PMB69MT Empty Carpeted 6" x 9" Speaker Cabinet

- 6" x 9" Speaker Cabinet
- Carpeted Wood Construction
- Terminal Cups
- Complete Pair per System
- Dimensions: 8.75"H x 4.25"D x 11.25"W



TCUP Screw-In Terminal Cup

- Screw in Type Terminal Cup
- 3" Overall Diameter
- Quick Connect Color Coded Terminals
- Packed in Header Card
- Includes 4 screws





WH68 6" 200 Watt High Power Paper Cone 8 Ohm Subwoofer

- Bumped and Vented Motor Structure
- Specially Treated Purple Cloth Edge Suspension
- Stronium Magnet Structure
- 1" High Temperature Aluminum Voice Coil
- Bumped Yoke Plate For Extended Excursion
- 8 Ohms Impedance
- 100 Watts RMS/200 Watts Peak
- Fs:80Hz, Qts:0.75, Qms:4.46, Qes:0.90, Vas(cuft):0.11, SPL(dB):90
- Overall Diameter: 6"
- SPL @ 1W/1M: 96dB
- Magnet Weight: 40 oz.
- Mounting Depth: 2.75"



WH88 8" 250 Watt High Power Paper Cone 8 Ohm Subwoofer

- Bumped and Vented Motor Structure
- Specially Treated Purple Cloth Edge Suspension
- Stronium Magnet Structure
- 1.5" High Temperature Aluminum Voice Coil
- Bumped Yoke Plate For Extended Excursion
- 8 Ohms Impedance
- 125 Watts RMS/250 Watts Peak
- Overall Diameter: 8"
- SPL @ 1W/1M: 96dB
- Magnet Weight: 50 oz.
- Mounting Depth: 3.375"

WH1038 10" 300 Watt High Power Paper Cone 8 Ohm Subwoofer

- Bumped and Vented Motor Structure
- Specially Treated Purple Cloth Edge Suspension
- Stronium Magnet Structure
- 1.5" High Temperature Aluminum Voice Coil
- Bumped Yoke Plate For Extended Excursion
- 8 Ohms Impedance
- 150 Watts RMS/300 Watts Peak
- Overall Diameter: 10"
- SPL @ 1W/1M: 98dB
- Magnet Weight: 70 oz.
- Mounting Depth: 4.25"

WH1238 12" 400 Watt High Power Paper Cone 8 Ohm Subwoofer

- Bumped and Vented Motor Structure
- Specially Treated Purple Cloth Edge Suspension
- Stronium Magnet Structure
- 1.5" High Temperature Aluminum Voice Coil
- Bumped Yoke Plate For Extended Excursion
- 8 Ohms Impedance
- 200 Watts RMS/400 Watts Peak
- Overall Diameter: 12"
- SPL @ 1W/1M: 98dB
- Magnet Weight: 85 oz.
- Mounting Depth: 5.25"

BNPS102 Dual 10" 1000 Watt Bandpass Speaker System w/Neon Accent Lighting

- Built-In Neon Accent Lighting
- Two 10" High Power 4 Ohm Sub-Woofer
- Silver Polypropylene Cone
- Specially Treated Black Rubber Edge Suspension
- 2" High Temperature Aluminum Voice Coil
- Bandpass Alignment For Extra Deep Bass
- Plexi-Glass Front Window
- 4 Tuned Ports
- 1000 Watts Peak Power
- Frequency Response: 35Hz-1K Hz
- Dimensions: 14"D x 28.5"W x 13"H



BNPS122 Dual 12" 1200 Watt Bandpass Speaker System w/Neon Accent Lighting

- Built-In Neon Accent Lighting
- Two 12" High Power 4 Ohm Sub-Woofer
- Silver Polypropylene Cone
- Specially Treated Black Rubber Edge Suspension
- 2" High Temperature Aluminum Voice Coil
- Bandpass Alignment For Extra Deep Bass
- Plexi-Glass Front Window
- 4 Tuned Ports
- 1200 Watts Peak Power
- Frequency Response: 35Hz-1K Hz
- Dimensions: 16"D x 31.5"W x 15.5"H



PP12 Dual 12" 300 Watt 4-Way Stereo Hatchback Speaker System

- Full Stereo Output
- High Quality MDF Carpeted Enclosure
- Each PP12 Contains: Two 12" Polymer Laminated High Power Woofers Two 3.4" Super Horn Piezo Tweeters
- Twin Bass Reflex Vents for Added Bass Response
- Quick Connect Input Terminals
- 2 Steel Black Waffle Grills
- 4 Ohm Impedance
- Frequency Response: 30Hz-36kHz
- Power Handling: 150 Watts per Channel
- SPL: 107dB @ 1W/1M
- Dimensions: 29"L x 12"H x 6.5"W



2014

www.PyramidCarAudio.com



America



Arctic



Classic



Super Blue

Model	Series	Watt Power	Channels	Power Feature	Power Feature
PB618	America	2000	4	4 X 500W Max Output	2 X 1000W Watts 2 Bridged
PB718	America	1000	2	2 X 500W Max Output	1 X 1000W Watts 2 Bridged
PB918	America	2000	2	2 X 1000W Max Output	1 X 2000W Watts 2 Bridged
PB2518	America	3000	2	2 X 1500W Max Output	1 X 3000W Watts 2 Bridged
PB3818	America	5000	2	2 X 2500W Max Output	1 X 5000W Watts 2 Bridged
PB715X	Classic	1000	2	2 X 500 Watts Total Output @ 4 Ohms	1000 Watts Output @ 4 Ohms
PB915X	Classic	1200	2	2 X 600 Watts Total Output @ 4 Ohms	1200 Watts Output @ 4 Ohms
PB417X	Arctic	1000	4	1000 Watts System Output @ 4 Ohms	4 X 35Watts Output @ 4 Ohms
PB717X	Arctic	1000	2	1000 Watts System Output @ 4 Ohms	2 X 50 Watts Output @ 4 Ohms
PB1217X	Arctic	1200	2	1600 Watts System Output	2 X 75 Watts Output @ 4 Ohms
PB1617X	Arctic	2000	4	2000 Watts @ 4 Ohms	4 X 75 Watts Total Output @ 4 Ohms
PB449X	Super Blue	1000	2	2 X 500 Watts	1 X 1000 Watts Output Bridged @ 4 Ohms

6980GX 6" X 9" 4-Way 800 Watts P.P. Cone Speakers

- Pair 6" x 9" Four Way Speakers
- Injected Poly Cones
- Non-Fatiguing Butyl Rubber Surround
- 70 Oz Magnet Structure
- High Power Voice Coil
- 3" Polymer Midrange
- 2" Dome Tweeter
- 1/2" Ceramic Super Tweeter
- 800 Watts Power
- Frequency Response: 35Hz-25KHz

680GX 6.5" Three-Way 500 Watts P.P. Cone Speakers

- Pair 6.5" Three Way Speakers
- Injected Poly Cones
- Non-fatiguing butyl rubber surround
- Narrow Profile Fits Most Car Doors
- 40 Oz Magnet Structure
- High Power Voice Coil
- Polymer Film Midrange
- Ceramic Super Tweeter
- 500 Watts Rated Max Power
- Frequency Response: 55 Hz-21 KHZ





328GS 3.5" 120 Watts Two-Way Speakers

- 3.5" Yellow Injection-Molded Polymica Cone Woofer
- Specially Treated Rubber Edge Suspension
- 20 oz. Magnet Structure

- 1.75" Aluminum Film Piezo Tweeter
- 120 Watts Rated Power
- SPL: 88dB

- Frequency Response: 100Hz-18k Hz
- 4 Ohm Impedance
- Mounting Depth: 1.75"

438GS 4" 160 Watts Two-Way Speakers

- 4" Yellow Injection-Molded Polymica Cone Woofer
- Specially Treated Rubber Edge Suspension
- Resists Moisture and Temperature Extremes
- 40 oz. Magnet Structure

- 1" High Temperature Aluminum Voice Coil
- 1.75" Aluminum Film Tweeter
- 160 Watts Rated Power
- SPL: 89dB

- Frequency Response: 90Hz-18k Hz
- 4 Ohm Impedance
- Mounting Depth: 1.75"

468GS 4" X 6" 160 Watts Three-Way Speakers

- 4" x 6" Yellow Injection-Molded Polymica Cone Woofer
- Specially Treated Rubber Edge Suspension
- Resists Moisture and Temperature Extremes

- 40 oz. Magnet Structure
- 1" High Temperature Aluminum Voice Coil
- 1.75" Aluminum Film Midrange
- 1" High Frequency Mylar Tweeter

- 160 Watts Rated Power
- SPL: 89dB
- Frequency Response: 100Hz-18k Hz
- 4 Ohm Impedance

572GS 5" x 7"/6" x 8 180 Watts Two-Way Speakers

- 5" x 7" Yellow Injection-Molded Polymica Cone Woofer
- Specially Treated Rubber Edge Suspension
- Fits Both 5" x 7" and 6" x 8" Configurations

- Resists Moisture and Temperature Extremes
- 40 oz. Magnet Structure
- 2" Aluminum Film Midrange
- 160 Watts Rated Power

- SPL: 90dB
- Frequency Response: 80Hz-18k Hz
- 4 Ohm Impedance
- Mounting Depth: 2.125"

652GS 6.5" 200 Watts Two-Way Speakers

- 6.5" Yellow Injection-Molded Polymica Cone Woofer
- Specially Treated Rubber Edge Suspension
- 40 oz. Magnet Structure

- 1" High Temperature Aluminum Voice Coil
- 2" Pole Mounted Cone Tweeter
- 200 Watts Rated Power

- SPL: 90dB
- Frequency Response: 80Hz-18k Hz
- 4 Ohm Impedance

4108GS 4" X 10" 300 Watts Three-Way Speakers

- 4" x 10" Brown Injection-Molded Polymica Cone Woofer
- Specially Treated Rubber Edge Suspension
- 50 oz. Magnet Structure

- 1" Aluminum Film Midrange
- 1" Piezo High Frequency Tweeter
- Black Anodized Speaker Basket
- 300 Watts Rated Power

- SPL: 90dB
- Frequency Response: 80Hz-20k Hz
- 4 Ohm Impedance
- Mounting Depth: 2.75"

312SX 3.5" 100 Watts Two-Way Dual Cone Speakers

- 3.5" Dual Cone Air Suspension Woofer
- Resists Moisture and Temperature Extremes
- 20 oz. Magnet Structure

- 100 Watts Rated Power
- 4 Ohm Impedance
- Frequency Response: 100-16kHz



4103SX 4" x 10" 300 Watts Three-Way Speakers

- 4" x 10" Three-Way Speaker System
- Paper Cone
- Rubber Surround

- 2" Piezo Midrange
- 1" Piezo Tweeter
- 300 Watts Rated Power

526DC 5.25" 100 Watts Two-Way Dual Cone Speakers w/Built-In Grill

- Ultra Thin Design Top Mount
- Grill is Built Onto Speaker
- 5.25" Full Range Speakers

- Dual Cone, for Extended High Range Response
- 100 Watts Peak Power
- Air Suspension Design



2060 300 Watts 3-Way Mini Box Speaker System

- Bass Reflex Speakers
- 3 Way Speaker System
- ABS Sealed Plastic Enclosure
- 3 1/4" Woofer/2" Midrange/1" Tweeter
- 300 Watts Peak Power
- Frequency Response: 70-21kHz
- SPL: 94dB
- 4 Ohm Impedance
- Complete Mounting Kit & Wires
- 71/4"W x 41/4"H x 51/4"D



3070 3.5" 2-Way 300 Watt Studio Monitor

- 3.5" Long Throw Woofer
- 1" High Compliance Polymer Tweeter
- Vented Design for High Power and Low Bass
- Heavy Duty ABS Construction w/Rubber Edge
- Quick Release Speaker Connection
- Built in Spring Loaded Mounting System
- 150 Watts Power RMS/300 Watts Peak
- 4 Ohm Impedance
- Frequency Response: 60-20kHz
- Dimensions: 4.75"W x 7.25"H x 4.75"D



3080 3.5" 2-Way 300 Watt bookcase speaker & Studio Monitor

- 3.5" Long Throw Woofer
- 1" High Compliance Polymer Tweeter
- Vented Design for High Power and Low Bass
- Heavy Duty ABS Construction w/Rubber Edge
- Quick Release Speaker Connection
- Built in Spring Loaded Mounting System
- 150 Watts Power RMS/300 Watts Peak
- 8 Ohm Impedance
- Frequency Response: 60-20kHz
- Dimensions: 4.75"W x 7.25"H x 4.75"D



3808 400 Watts 3-Way Mini Box Speaker System

- Rubber Air Suspension Woofer
- 4" Woofer/2" Mid/1" Tweeter
- 400 Watts Peak Power
- Ferro Fluid Enhanced Voice Coils
- Aluminum Die Cast Cabinet
- Frequency Response: 80-20kHz
- SPL: 94dB
- 4 Ohm Impedance
- Complete Mounting Kit & Wires
- Dimensions: 41/4"H x 73/8"W x 41/4"D



4080 High Performance 400 Watt book case Speaker System with Monitor Style Bass Reflex

- Excellent for Monitors or Surround Sound Applications
- 5" Carbon Poly Long Throw Woofer
- 40 oz. Magnet Structure
- 1" High Compliance Composite Mylar Tweeter
- Capacitor Crossover Network
- Bass Reflex Vent for Added Bass Response
- Heavy Duty ABS Construction
- Quick Connect/Disconnect Speaker Terminals
- Unique Spring Loaded Wall Mounting System
- Removable Wire Mesh Grill
- Power Range: 25 to 400 Watts
- Frequency Response: 35-22k Hz
- Impedance: 8 Ohms
- Vented Design for High Power and Low Bass
- Dimensions: 9.25"H x 6.25"W x 5.75"D



5080 6.5" 2-Way 500 Watt Studio Monitor

- 6.5" Carbon Poly Long Throw Woofer
- 250 Watts RMS/500 Watts Peak
- 8 Ohm Speaker Impedance
- 1" High Compliance Mylar Tweeter
- Vented Design for High Power and Low Bass
- Heavy Duty ABS Construction
- Rubber Edge
- Quick Release Push Type Speaker Connection
- Built in Spring Loaded Mounting System
- Frequency Resp.: 40-20k Hz
- Dimensions: 10.25"H x 7"W x 6.5"D





MDC5 100 Watts 4" Waterproof Flush mount 2 Way Marine Speaker System

- 4" Dual Cone Full Range Speakers
- Completely Waterproof
- For Marine or Car Door Use
- Polypropylene Cone with Cloth Surround
- Built-In Molded Grill
- Molded ABS Plastic Basket
- 15 Oz. Circuit Magnet
- Frequency Response: 100 Hz-18Khz
- Impedance 4 Ohms
- Mounting Depth: Only 1 1/2"
- Complete pair with Wire & Mounting Hardware



MDC6 5.25" Marine 100 Watts Dual Cone Waterproof Stereo Speakers

- 5.25" Full Range Dual Cone Speakers
- Completely Waterproof
- For Marine or Car Door Use
- Polypropylene Cone w/Cloth
- Built-In Molded Grill
- Molded ABS Plastic Basket
- 20 oz. Circuit Magnet
- Frequency Response: 100-18kHz
- 4 Ohm Impedance
- Mounting Depth: 1.5"
- 100 Watts Peak Power
- Ultra Slim Design
- Complete Pair w/Mounting Kit, Wires & Grills



MDC7 6.5" Marine 120 Watts Dual Cone Waterproof Stereo Speakers

- 6.5" Full Range Dual Cone Speakers
- Completely Waterproof
- For Marine or Car Door Use
- Polypropylene Cone w/Cloth
- Built-In Molded Grill
- Molded ABS Plastic Basket
- 1" Aluminum Voice Coil
- 20 oz. Circuit Magnet
- Frequency Response: 45-16k Hz
- 4 Ohm Impedance
- Mounting Depth: 2.5"
- 120 Watts Peak Power
- Complete Pair w/Mounting Kit, Wires & Grills



3071WP 300 Watts 3.5" 2-Way Indoor/Outdoor Waterproof Speaker System

- Completely Water Proof Monitors
- 3.5" Poly Woofer
- 1" High Compliance Mylar Tweeter
- Vented Design for High Power and Low Bass
- Heavy Duty ABS Construction w/Rubber Edge
- Aluminum Brackets
- Quick Release Speaker Connection
- Built in Spring Loaded Mounting System
- 150 Watts Power RMS/300 Watts Peak
- 4 Ohm Speaker Impedance
- Frequency Response: 60-20kHz
- Dimensions: 4.75"W x 7.25"H x 4.75"D



4071WP 400 Watts 2-Way Indoor/Outdoor Waterproof Speaker System

- Completely Water Proof Monitors
- 1" High Compliance Mylar Tweeter
- Vented Design for High Power and Low Bass
- Heavy Duty ABS Construction w/Rubber Edge
- Aluminum Brackets
- Quick Release Speaker Connection
- Built in Spring Loaded Mounting System
- 150 Watts Power RMS/300 Watts Peak
- 4 Ohm Speaker Impedance
- Frequency Response: 60-20kHz



5071WP 500 Watts 2-Way Indoor/Outdoor Waterproof Speaker System

- Excellent For Use On Boats, Marinas, Decks, Patios, Poolside, Outdoors, Etc.
- Completely Waterproof
- 6.5" Aluminum Injection Cone Woofer
- 50 oz. Magnet Structure
- 1" High Compliance Mylar Tweeter
- Capacitor Crossover Network
- Bass Reflex Vent for Added Bass Response
- Heavy Duty ABS Construction
- Quick Connect Speaker Terminals
- Unique Spring Loaded Mounting System
- Removable Rustproof Mesh Grills
- Power Range: 25-500 Watts
- Frequency Response: 30-22K Hz
- Impedance: 4 Ohms
- Dimensions: 7.2"W x 11.6"H x 6.4"D



TW10 1" 100 Watts Super Mini Dome Tweeter w/In-Line Crossover

- 1" Super Mini Dome Tweeters
- Highly Rigid Mylar Diaphragm
- Sleek Mesh Grills
- Super Strong Neodymium Magnet
- Flexible Omni-directional Mounting Base
- Power Handling: 100 Watts
- Ferro Fluid Enhanced Voice Coil
- Frequency Response: 5k - 20kHz
- SPL: 92 dB (1W/1M)
- 4 Ohm Impedance
- Complete Pair with In-Line Crossover Network
- Wiring Harness & Mounting Hardware Included



TW105 3.75" 200 Watts Super Horn Tweeter

- 3.75" Square Super Horn Tweeter
- Frequency Response: 4-20kHz
- SPL 94dB @ 1W/1M
- Low Distortion, Light Weight & Highly Reliable
- 100 Watts RMS/200 Watts Peak Power
- 4-8 Ohms Impedance
- Typical Impedance Appears as .13uF Capacitor
- Series Resistor is Recommended
- Complete Pair in Gift Box



TW12 2" x 5" 200 Watts Wide Dispersion Horn Piezo Tweeter

- 2" x 5" Wide Dispersion Horn Tweeter
- Frequency Response: 3.5kHz-30kHz
- SPL: 92dB @ 1W/1M
- Excellent Transient Response
- Low Distortion
- Light Weight and Highly Reliable
- 100 Watts RMS/200 Watts Peak
- Complete Pair in Gift Box
- Typical Impedance Appears as 1uF Capacitor
- Suited for 4-8 Ohms Impedance Applications



TW125 7" x 3" 200 Watts Piezo Horn Tweeter

- 7.5" x 3.25" Piezo Tweeter
- Excellent Transient Response, Low Distortion
- Light Weight, Highly Reliable
- Extreme High Frequency Response: 3.5-30kHz
- 100 Watts RMS/200 Watts Peak
- 4-8 Ohms Impedance
- Sensitivity: 94dB
- Pair in Gift Box



TW17 2" 200 Watts Satellite Tweeter

- 2" Satellite Tweeter
- Tweeter Can be Removed from Case for Flush Mounting
- Super Polymer Diaphragm
- 4 Ohms Impedance
- 10 oz. Magnet Structure
- 100 Watts RMS/200 Watts Peak Power
- Ferro Fluid Enhanced
- Sensitivity: 93dB
- Frequency Response: 5k-22kHz
- Crossover Capacitor Network Installed



TW18 3.25" 300 Watt Aluminum Die-Cast Super Titanium Tweeter

- 3.25" Aluminum Bullet Horn w/1" Super Tweeter
- 20 oz. Magnet Structure
- 300 Watts Rated Power
- Ferro Fluid Enhanced
- Frequency Response: 2k-25kHz
- SPL: 96dB
- 4/8 Ohms Impedance
- Complete to Any Woofer Enclosure
- Complete Pair w/Capacitor Cross-over Network & Hardware





TW18BK 3.25" 300 Watt Aluminum Die-Cast Super Titanium Tweeter

- 3.25" Aluminum Bullet Horn w/1" Super Tweeter
- 20 oz. Magnet Structure
- 300 Watts Rated Power
- Ferro Fluid Enhanced
- Frequency Response: 2k-25kHz
- SPL: 96dB
- 4/8 Ohms Impedance
- Complete to Any Woofer Enclosure
- Complete Pair w/Capacitor Cross-over Network & Hardware



TW23 120 Watt Mylar Dome Tweeter

- Mylar Dome
- High Density Neodymium Magnet
- Surface Mount and Pivot Mount System
- Integrated Crossover System
- Frequency Response: 2k-24k Hz
- SPL: 101dB @ 1W/1M
- Power Handling: 120 Watts



TW25W 2" 100 Watts Satellite Tweeter w/Woodgrain Finish

- 2" Satellite Tweeter
- Woodgrain Finish
- 1/2" Super Polymer Dome
- 8oz. Magnet Structure
- Surface or Angle Mount
- Wire Mesh Grill Protects Dome
- Ferro Fluid Enhanced Voice Coil
- 4 Ohm Impedance
- 50 Watts RMS/100 Watts Peak
- Freq. Resp.: 5k-20k
- Sensitivity: 93dB
- Capacitor Crossover Network Included



TW26 1" 120 Watts Titanium Dome Tweeter

- 1" Titanium Dome Tweeter
- High Compliance Response: 2k-20kHz
- 20 oz. Magnet Structure
- 1" High Temperature Coil
- Ferro Fluid Enhanced
- 120 Watts Rated Power
- 4 Ohms Impedance
- Complete Pair in Gift Box
- Includes Compensation Capacitors



TW27 200 Watt Tri-Mount Tweeter

- High Performance Automotive Speaker
- Extended High Frequency Motorola® Piezo Driver
- Exclusive three-way mountable system: Surface / Flush / Angle
- Frequency Response: 3kHz - 30kHz
- Sensitivity: 87dB @ 1W/1M
- 200 Watts Maximum Power Output



TW28 300 Watt Aluminum Bullet Horn in Enclosure w/Swivel Housing

- 3.75" Aluminum Bullet Horn w/1" Titanium Dome Tweeter
- High Frequency Response: 2k-25kHz
- 1" High Temperature Voice Coil
- 20 oz. Magnet Structure
- Ferro Fluid Enhanced
- 300 Watts Peak Power
- 4 Ohms Impedance
- Complete Pair in Gift Box
- Installed w/Compensation Capacitors



TW36 7" x 3" 400 Watts Wide Dispersion Horn Tweeter

- 7" x 3" Wide Dispersion Horn Tweeter
- Die Cast Metal Black Anodized Frame
- Frequency Response: 1.8-25kHz
- 200 Watts RMS/400 Watts Peak Power
- Ferro Fluid Enhanced
- 20 oz. Magnet Structure
- 4 Ohms Impedance
- Sensitivity: (2.38 v,1m) 93dB
- Mounting Depth: 5.85"
- Pair in Gift Box
- Includes Compensation Capacitors



TW44 1" 300 Watt Heavy Duty Titanium Super Tweeter

- 1" Titanium Super Tweeter
- Die Cast Aluminum Frame
- 1" High Temperature Kapton Voice Coil
- 30 oz. Magnet Structure
- 150 Watts RMS/300 Watts Rated Power
- 4-8 Ohms Impedance
- Ferro Fluid Enhanced Voice Coil
- Sensitivity: 104dB
- Frequency Response: 2k-20kHz
- Crossover Capacitor Included
- Compatible with any Woofer Enclosure
- 3.125" Diameter/2.25" Mounting Depth



TWD10 150 Watt Compression Tweeter

- Tweeter Compression Horn Driver
- Titanium Diaphragm
- 1" Copper Voice Coil
- 20 oz Magnet Structure
- Frequency Response: 1.2k - 15k Hz
- Sensitivity: 96dB SPL 1W/1M
- 4-8 Ohm Impedance
- 80 Watts RMS
- 150 Watts Peak
- Fits Horns with 1 3/8" x 18 TPI Threads



TWD60X 400 Watt Mid/Tweeter Compression Driver

- Frequency Response: 1.5k - 20k Hz
- Sensitivity: 96dB
- 8 Ohm Impedance
- 400 Watts Peak Power Handling





TWD80 600 Watt Mid/Tweeter Compression Driver

- Titanium Diaphragm
- Gold Plated Banana Plugs
- 1.75" Copper Voice Coil
- 80 oz Magnet Structure
- Frequency Response: 1500 - 20k Hz
- Sensitivity: 108dB SPL 1W/1M
- 8 Ohm Impedance
- 600 Watts Peak Power Handling
- Fits Horns with 1 3/8" x 18 TPI Threads



TW46 1.5" 400 Watt Die-Cast Aluminum Titanium Super Tweeter

- 1.5" Titanium Super Tweeter
- Die Cast Aluminum Frame
- 1.5" High Temperature Kapton Voice Coil
- 60 oz. Magnet Structure Weight
- 400 Watts Peak Power
- 4-8 Ohms Impedance/Ferro Fluid Enhanced
- Sensitivity: 105dB
- Frequency Response: 2k-25kHz
- Single Pack in Gift Box
- Crossover Capacitor Included
- 4" Diameter/2.5" Mounting Depth



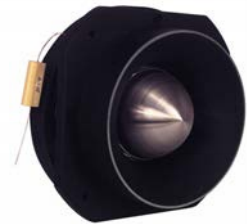
TW47 2" 600 Watt Die-Cast Aluminum Titanium Super Tweeter

- 2" Titanium Super Tweeter
- Die Cast Aluminum Frame
- High Temperature Kapton Voice Coil
- 60 oz. Magnet Structure Weight
- 600 Watts Peak Power
- 4-8 Ohms Impedance/Ferro Fluid Enhanced
- Sensitivity: 106dB
- Frequency Response: 2k-25kHz
- Single Pack in Gift Box
- Mylar Crossover Capacitor Included
- 3.125" Diameter/2" Mounting Depth



TW57 3" 1000 Watt Die-Cast Aluminum Titanium Super Tweeter

- 3" Titanium Super Tweeter
- Die Cast Aluminum Frame
- High Temperature Kapton Voice Coil
- 100 oz. Magnet Structure Weight
- 1000 Watts Peak Power
- 4-8 Ohms Impedance/Ferro Fluid Enhanced
- Sensitivity: 109dB
- Frequency Response: 2k-25kHz
- Single Pack in Gift Box
- Crossover Capacitor Included
- 5" Diameter/2" Mounting Depth



TW67 3" 1000 Watt Die-Cast Aluminum Titanium Super Tweeter

- 3" Titanium Super Tweeter
- Die Cast Aluminum Frame
- 3" High Temperature Kapton Voice Coil
- 150 oz. Magnet Structure Weight
- 500 Watts RMS Power/1000 Watts Peak Power
- 4-8 Ohms Impedance
- Ferro Fluid Enhanced Voice Coil
- Sensitivity: 112dB
- Frequency Response: 1.5k-25kHz
- Single Pack in Gift Box
- Mylar Crossover Capacitor Included
- 7" Diameter/4.5" Mounting Depth



TW18VC Replacement Voice Coil & Diaphragm for TW18

- Replacement Voice Coil & Diaphragm for TW18

TW44VC Replacement Voice Coil & Diaphragm for TW44

- Replacement Voice Coil & Diaphragm for TW44

TW46VC Replacement Voice Coil & Diaphragm for TW46

- Replacement Voice Coil & Diaphragm for TW46

TW47VC Replacement Voice Coil & Diaphragm for TW47

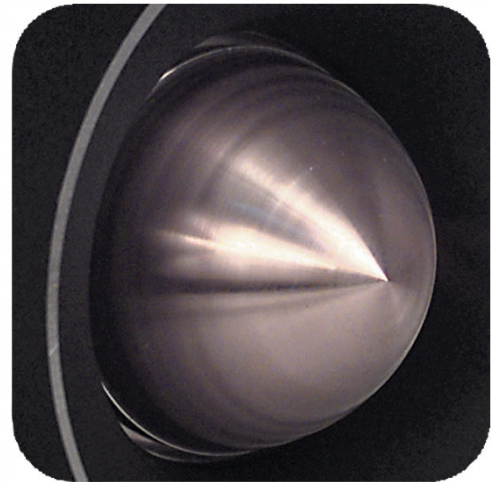
- Replacement Voice Coil & Diaphragm for TW47

TW57VC Replacement Voice Coil & Diaphragm for TW57

- Replacement Voice Coil & Diaphragm for TW57

TW67VC Replacement Voice Coil & Diaphragm for TW67

- Replacement Voice Coil & Diaphragm for TW67



PMBHTW4 200 Watt 4-Way Tweeter Cabinet

- Carpeted Heavy Duty Construction
- 4 Way Tweeter System
- Contains: Four Motorola 3" Super Tweeters
- Power Handling: 100 Watts RMS 200 Watts Peak
- Dual 1/4" Phono Jacks
- Frequency Response: 3.5k-20kHz
- SPL: 97dB @ 1W/1M
- Dimensions: 19"W x 8"D x 5"H



SP5 All Weather 5" PA Mono Extension Horn Speaker

- 5" Reflex ABS Horn
- 8 Watts RMS Nominal Power
- 15 Watts Peak Maximum Power
- 8 Ohms Impedance
- Frequency Response: 450-5,000Hz
- Output: 112dB
- 180° Swiveling Adjustable Bracket
- 10' Pre-Wired Cord with 3.5mm Mono Connector



CB1000 Communications Extension Speaker

- 8 Ohms Impedance
- Maximum 25 Watts
- Water Proof
- Complete with Swivel Mounting Bracket Hardware and 6FT of Cable with Plug
- Dimensions: 4" x 4.25" x 2.5"





NS2 10 Amp In-Line Noise Suppressor

- Easily Installed
- 10 Amps
- Reduces and Eliminates Engine Interference
- Compatible w/Receivers, Equalizers & Amplifiers



NS10 10 Amp In-Line Noise Suppressor

- Easily Installed
- 10 Amps
- Reduces and Eliminates Engine Interference
- Compatible w/Receivers, Equalizers & Amplifiers



NS12 12 Amp In-Line Noise Suppressor

- Easily Installed
- 12 Amps
- Reduces and Eliminates Engine Interference
- Compatible w/Receiver, Equalizers & Amplifiers
- Easily Installed



NS20 15 Amp RCA Noise Suppressor

- 200 Watts Noise Suppressor
- Designed to Eliminate Noise
- Used w/Amplifier
- Matches Impedance between Amp & Deck
- RCA Plugs



NS21 20 Amp RCA Noise Suppressor

- 250 Watts Noise Suppressor
- Easily Installed w/RCA Jacks
- Designed to Eliminate Noise
- Used w/Amplifier
- Matches Impedance Between Amp and Deck



NS50 35 Amp In-Line Noise Suppressor

- 35 Amp Transistorized Noise Suppressor
- Transparent Tube Housing
- Easily Installed
- Reduces and Eliminates Ignition/Alternator Noise
- Compatible w/ Receivers, CB€™s, Equalizers & Amplifiers



NS60 High to Low Level Impedance Adaptor

- Converts High Level Speaker Output to RCA Line Level
- Adjustable Level Control
- Allows Easy Installation of EQ€™s & Amplifiers
- Adds RCA Line Outputs to Systems without
- Hooks up to Domestic & Foreign Car Models



RY5 2 Male to 1 Female RCA Adaptor

- RCA connector : Female jack 2 Male plugs



R4G 4ft Stereo RCA to RCA Cable

- 4ft Stereo RCA to RCA Cable



R20G 20ft Stereo RCA to RCA Cable

- 20ft Stereo RCA to RCA Cable



PSV6K AC to DC Adaptor

- Input: 100-240 VAC ~ 50/60Hz
- Output: DC 12V 5000mA/5A
- Operating Temperature: 0°C ~ 40°C
- Storage Temperature: -20°C ~ 85°C
- Dimension: 4.72" x 2.05" x 1.26"



PS2K AC to DC Adaptor

- Input 110-220VAC ~ 50/60Hz
- Output DC 12V 4000mA/ 4A
- Operation Temperature: -10C - +65C
- Storage Temperature: -20C - +76C
- Dimension: 4.41"x 1.82" x 1.26"





Ground/Power Wire

Model	Gauge	Style	Length (Feet)
RPR425	4	Power (Red)	25
RPB425	4	Ground (Black)	25
RPR4100	4	Power (Red)	100
RPB4100	4	Ground (Black)	100
RPR825	8	Power (Red)	25
RPB825	8	Ground (Black)	25
RPR8100	8	Power (Red)	100
RPB8100	8	Ground (Black)	100
RPR10100	10	Power (Red)	100
RPB10100	10	Ground (Black)	100



Model	Gauge	Length (Feet)
RSW1250	12	50
RSW12100	12	100
RSW1450	14	50
RSW14100	14	100
RSW1650	16	50
RSW16100	16	100
RSW1850	18	50
RSW18100	18	100
RSW18500	18	500
RSW2050	20	50
RSW20100	20	100
RSW20500	20	500

Speaker Zip Wire



PBIN2 1200 Watt 20 ft. Amplifier Hookup Kit for Battery Unit & Speakers

- 20ft 8 Gauge Red Power Wire
- 4ft 8 Gauge Black Ground Wire
- 20ft 16 Gauge Blue Remote Turn-on
- 20ft 12 Gauge Speaker Wire
- 20ft Right Angle RCA Interconnect Audio Cable
- 6ft Black Split Loom Cable Conduit
- AGU Type 60A Gold Plated Fuse
- Water Resistant In-line Fuse Holder
- 2 Ring Terminals: 8 G
- 2 Spade Terminals: 8 G
- 5 Spade Terminals: 14-16 G
- 3 Butt Connectors
- 20 Cable Ties
- 1 Black Grommet



PBIN3 1000 Watt 20 ft. Amplifier Installation Wiring Kit

- 20ft 8 Gauge Red Power Wire
- 4ft 8 Gauge Black Ground Wire
- 17ft Right Angle RCA Interconnect Audio Cable
- 3ft Black Split Loom Cable Conduit
- 60A MAXI Type Nickel Plated Fuse
- MAXI In-line Fuse Holder
- 2 Ring Terminals: 8 G
- 2 Spade Terminals: 8 G
- 2 Butt Connectors
- 10 Cable Ties



RFPS Inline Fuse Holder

- 2 Fuse Wiring Panel
- 2 In/4 Out Configuration
- Gold Plated Fuse Holders & Wire Screw Terminals
- 8/10/12 Gauge Compatible
- Complete With Fuses



RFP1 1 to 4 Distribution Block

- Distribution Block
- 1 In/4 Out



RFP2 1 In/2 Out Fuse Wiring Panel

- 2 Fuse Wiring Panel
- 1 In(4/6/8 AWG)/2 Out (8/10/12 AWG) Configuration
- Gold Plated Fuse Holders & Wire Screw Terminals
- 8/10/12 Gauge Compatible
- Complete With Two 30 Amp Fuses



RFP3 3 In/3 Out Three 30 Amp Fuse Wiring Panel

- 3 Fuse Wiring Panel
- 3 In/3 Out Configuration
- Gold Plated Fuse Holders & Wire Screw Terminals
- 8/10/12 Gauge Compatible
- Complete With Three 30 Amp Fuses





PMBGW5 5" Grills Packaged Bulk 96 Per Carton

- 5" Grills Packaged Bulk
- 96 Per Carton

GW5BK 1 Pair 5" Grills w/Brackets & Screws

- 1 Pair 5" Grills w/Brackets & Screws
- Packed in a Gift Box

GW10BK 1 Pair 10" Grills w/Brackets & Screws

- 1 Pair 10" Grills w/Brackets & Screws
- Packed in a Gift Box

GW12BK 1 Pair 12" Grills w/Brackets & Screws

- 1 Pair 12" Grills w/Brackets & Screws
- Packed in a Gift Box

GW15BK 1 Pair 15" Grills w/Brackets & Screws

- 1 Pair 15" Grills w/Brackets & Screws
- Packed in a Gift Box



CB20 Magnetic Mount CB Antenna

- Perfect For all CD Ranceivers
- Magnetic Mount Base
- 118" Coax Cable and Coupler Included
- Easily Adjustable to Lowest SWR
- Fits All Import and Domestic Cars

3800 AM/FM Antenna with Built-In Power Booster

- Universal Ball Base
- Flexible Spring Mount
- Deluxe Adjustable Ball Base
- Top Cowl Mount 180 Degrees
- Extended Length 53"
- 54" Coax Cable with Plug
- Fits All Import and Domestic Vehicles

1307 Trunk/Fender Mount AM/FM Antenna

- Detachable 18.5" Mast
- Adjustable Universal Ball Base Top Mount
- 48" Shielded Cable with Plug
- Fits All Import and Domestic Vehicles

1305 Rugged Heavy Duty AM/FM Antenna

- Flexible Rubber 16" Mast
- Adjustable Universal Spring Mounted Base
- 60" Shielded Cable with Plug
- Fits All Import and Domestic Vehicles
- Rugged Heavy Duty Design

1302 3 Section Stainless Steel AM/FM Antenna

- 3 Section Stainless Steel Antenna Extendable to 53"
- Adjustable Universal Spring Mounted Ball Base
- 54" Shielded Cable with Plug
- Fits All Import and Domestic Vehicles
- Rugged Heavy Duty Design



HK77 Mylar Diaphragm Stereo Headphones

- Attractive Fluorescent Color
- Ultra Lightweight Design
- Adjustable Headstrap
- Removable Swivel Type Earpieces
- 1/8" Stereo Plug
- 13mm Mylar Diaphragm, Sealed Back
- Impedance: 32 Ohms
- Frequency Response: 20Hz-20kHz
- Sensitivity: 98dB @ 1kHz
- 4' Long Cord
- Blister Card Package

