

**PYLE®**  
www.PyleAudio.com



## 2014 New Item Catalog

### Featuring 'PIPCAM' Series IP Cameras



**PIPCAM5** IP Camera Surveillance Security Monitor with Wi-Fi, P2P Network, Image Capture, Video Recording, Built-in Web Server, Software Included, Downloadable App

**PIPCAM8** IP Camera Surveillance Security Monitor with Wi-Fi, H.264 Video, P2P Network, Image Capture, Video Recording, Built-in Microphone and Speaker for 2-Way Communication, Built-in Web Server, Software Included, Downloadable App

**PIPCAM15** Weatherproof IP Camera Surveillance Security Monitor with Wi-Fi, P2P Network, Image Capture, Video Recording, Built-in Web Server, Software Included, Downloadable App

The Pyle PIPCAM Series Smart IP Camera and Recording Systems with Wi-Fi are easy to set up and operate. Make wireless surveillance simple and readily available where necessary. Connect the camera system to your wired or wireless modem and monitor the situation. Whether used at home or at work, to add an extra line of security or just monitoring pets while away, you'll now have the ability to access high-quality video surveillance that is viewable from any location. Download the free 'Pyle IP Cam' app to unlock more features. Select models allow you to use the 'Pyle IP Cam' app with the Included remote viewing software to control the camera with pan and tilt ability from your iPhone, iPad, Android, Tablet or PC. The 'Pyle IP Cam' app is free to download and available for iOS and Android. Programmable alarm and Email alerts can notify you every time the camera senses movement thanks to the motion detector function. Built-in camera microphone lets you hear what is happening around the camera and built-in speaker allows two-way communication with the viewing area. The Pyle PIPCAM Series IP Network Cameras gives the do-it-yourselfer the ability to install and enjoy the latest recording and surveillance technology.



## **PIPCAM5** *IP Camera Surveillance Security Monitor with Wi-Fi, P2P Network, Image Capture, Video Recording, Built-in Web Server, Software Included, Downloadable App*



- Smart Digital Camera System for Surveillance and Monitoring
- Wirelessly Connects to the Internet via Wireless (Wi-Fi) or Wired (Ethernet) Connection
- View and Control your Cameras Anywhere: Built-in Web Server
- Control the System Remotely with Your PC or Smartphone
- Capture, Record and Adjust Camera Positioning Remotely
- Setup Alarm and Email Alerts, Triggered by Built-in Motion Sensor
- Wireless Pan/Tilt Controls and Video Through Website or the Free Mobile App
- Includes Camera Customization and Management Software
- Software Supports PC Recording and Monitoring for Multiple Cameras
- Create Multiple User Accounts and Passwords
- Schedule (Set Time) or Round the Clock Surveillance
- 16 IR-LED Lights for Low Light Situations
- High Resolution Capability (300K Pixels) Day or Night
- Video Resolution: 640 x 480 (VGA), 320 x 240 (QVGA)
- Ability to Connect Alarm Outputs to Wired Alarm Input Sensors and Alarm Output Devices
- High-Speed Video Processor with Optimized Video Compression
- Viewing Angle: 90° Diagonally, 68° Horizontally
- Pan Adjustment: 270° - Tilt Adjustment: 120° Technical Specs:
- MJPEG Video Compression
- Supported Protocols: TCP/IP, DHCP, SMTP, HTTP, DDNS, UPNP, PPPoE, FTP, DNS, UDP, GPRS
- Supports 3G, iPhone, iPad, Android, Smart Phone, Tablet, PC Control and Surveillance
- Supports IE, Firefox, Safari, and Google Chrome Browsers
- Supports Dynamic IP (DDNS) and UPNP LAN and Internet (ADSL, Cable Modem)
- Supports WEP/WPA/WPA2 Encryption
- Sensor: 1/4" Color CMOS Sensor
- IR Lens: F 2.0 6mm/ 3.6mm
- Video Frame Rate: 15fps (VGA), 30fps (QVGA)
- Flip Mirror Images: Vertical / Horizontal
- Light Frequency: 50Hz, 60Hz or Outdoor
- Wireless LAN: Supports wireless networks (Wi-Fi/802.11/b/g)
- WEP Encryption Disable / 64 bit / 128 bit
- WPA/WPA2 Encryption TKIP / AES
- Safe Operating Temperature: 14° F to 131° F
- Power Consumption: 5W (Max.)
- Power Supply 5VDC/2A External Power Adapter

## **PIPCAM8** *IP Camera Surveillance Security Monitor with Wi-Fi, H.264 Video, P2P Network, Image Capture, Video Recording, Built-in Microphone and Speaker for 2-Way Communication, Built-in Web Server, Software Included, Downloadable App*



- Smart Camera System for Surveillance and Monitoring
- Wirelessly Connects to the Internet via Wireless (Wi-Fi) or Wired (Ethernet) Connection
- View and Control your Cameras Anywhere: Built-in Web Server
- Control the System Remotely with Your PC or Smartphone
- Capture, Record and Adjust Camera Positioning Remotely
- Save Recordings: Built-in SD Memory Card Slot
- Setup Alarm and Email Alerts, Triggered by Built-in Motion Sensor
- Wireless Pan/Tilt Controls and Video Through Website or the Free Mobile App
- Includes Camera Customization and Management Software
- Software Supports PC Recording and Monitoring for Multiple Cameras
- Create Multiple User Accounts and Passwords
- Schedule (Set Time) or Round the Clock Surveillance
- 16 IR-LED Lighting (Night Visibility 60 Feet)
- Image Resolution: 1280 x 720 Pixels Day or Night
- Video Resolution: 1280 x 720 (VGA), 640 x 368 (VGA), 320 x 208 (QVGA)
- 1 Channel Audio Input and Output w/ ADPCM (Audio Compression)
- Built-in Speaker and Microphone Allow Two-Way Audio Communication
- Ability to Connect Alarm Outputs to Wired Alarm Input Sensors and Alarm Output Devices
- Powerful High-Speed Video Protocol Processor with Optimized Video Compression
- Pan Adjustment: 270° - Tilt Adjustment: 120°
- Adjustable Viewing Angle: 60° Technical Specs:
- H.264 MJPEG Video Compression
- Supported Protocols: TCP/IP, HTTP, DNS, DHCP, PPPoE, SMTP, FTP, SSL, TFTP, NTP, ARP/RARP, NFS, RTSP, RTP, RTCP
- Supports 3G, iPhone, iPad, Android, Smart Phone, Tablet, PC Control and Surveillance
- Phone, Tablet, PC Control and Surveillance
- Supports IE, Firefox, Safari, and Google Chrome Browsers
- Supports Dynamic IP (DDNS) and UPNP LAN and Internet (ADSL, Cable Modem)
- Supports WEP/WPA/WPA2 Encryption
- Sensor: 1/4" Color CMOS Sensor
- IR Lens: f: 4.2 mm, F:2.0
- Video Frame Rate: 30fps (VGA), 30fps (QVGA)
- Flip Mirror Images: Vertical / Horizontal
- Light Frequency: 50Hz, 60Hz or Outdoor
- Wireless LAN: Supports wireless networks: IEEE 802.11b/g/n
- WEP Encryption Disable / 64 bit / 128 bit
- Wireless Security: WEP and WPA/WPA2 Encryption
- Safe Operating Temperature: 14° F to 131° F
- Power Consumption: 7W (Max.)
- Power Supply: 5VDC/2A (EU,US,AU adapter or other types optional)

## **PIPCAM15** *Weatherproof IP Camera Surveillance Security Monitor with Wi-Fi, P2P Network, Image Capture, Video Recording, Built-in Web Server, Software Included, Downloadable App*



- Smart Digital Camera System for Surveillance and Monitoring
- Heavy Duty Marine Grade All-Weather Housing
- Wirelessly Connects to the Internet via Wireless (Wi-Fi) or Wired (Ethernet) Connection
- View and Control your Cameras Anywhere: Built-in Web Server
- Control the System Remotely with Your PC or Smartphone
- Capture, Record and Observe Camera From Another Location
- Setup Alarm and Email Alerts, Triggered by Built-in Motion Sensor
- View Video Through Website or the Free Mobile App
- Includes Camera Customization and Management Software
- Software Supports PC Recording and Monitoring for Multiple Cameras
- Create Multiple User Accounts and Passwords
- Schedule (Set Time) or Round the Clock Surveillance
- 24 IR-LED Lights for Low Light and Night Time
- High Resolution Capability (300K Pixels) Day or Night
- Video Resolution: 640 x 480 (VGA), 320 x 240 (QVGA)
- High-Speed Video Processor with Optimized Video Compression
- Viewing Angle: 90° Diagonally, 68° Horizontally Technical Specs:
- MJPEG Video Compression
- Supported Protocols: TCP/IP, DHCP, SMTP, HTTP, DDNS, UPNP, PPPoE, FTP, DNS, UDP, GPRS
- Supports 3G, iPhone, iPad, Android, Smart Phone, Tablet, PC Control and Surveillance
- Supports IE, Firefox, Safari, and Google Chrome Browsers
- Supports Dynamic IP (DDNS) and UPNP LAN and Internet (ADSL, Cable Modem)
- Supports WEP, WPA, WPA2 Encryption
- Sensor: 1/5" Color CMOS Sensor
- IR Lens: F 2.0 6mm/ 6mm
- Video Frame Rate: 15fps (VGA), 30fps (QVGA)
- Flip Mirror Images: Vertical / Horizontal
- Light Frequency: 50Hz, 60Hz or Outdoor
- Wireless LAN: Supports wireless networks (Wi-Fi, 802.11/b/g)
- WEP Encryption Disable / 64 bit / 128 bit
- WPA/WPA2 Encryption TKIP / AES
- Safe Operating Temperature: 14° F to 131° F
- Power Consumption: 5W (Max.)
- Power Supply 5VDC/2A External Power Adapter

## **PSBV320BT** Bluetooth Soundbar Digital Speaker System, 200 Watt, FM Radio, Wireless Remote, Subwoofer Output, Stereo Input

- Powerful and Compact Sound Bar Speaker
- Built-in Bluetooth for Instant Wireless Music Streaming
- Works with All of Your Favorite Bluetooth-Enabled Devices
- (iPhone, Smartphone, iPod, MP3 Player, iPad, Tablet, PC, MP3 player, etc.)
- (2) x 3.5 inch Speakers and Classic Dome Tweeter
- Soft Touch Digital Control Panel with LCD Display
- Digital LED Front Panel Indicators with Input Selection
- Bass, Treble, Volume, Input, Mute, Sleep Controls
- FM Radio Receiver with 10 Memory Presets
- MP3 / External Device Input Connector Jack
- Optical & Coaxial Digital Audio Inputs
- Line Output for Active Subwoofer
- Impressive Bass Response
- Effectively Reproduces Full Range Stereo Sound
- (L) and (R) Channel System
- Includes Remote Control
- Technical Specs:
- Power Output: 200 Watts Peak / 100 Watts RMS
- Bluetooth Version V2.1 + EDR with A2DP
- Frequency Response: 350Hz - 20kHz
- Impedance: 4 Ohm
- S/N Ratio: >90 dB
- Weight: 11 lbs.
- Power Supply: DC 15V 1.5A
- Dimensions: 39.3 x 3.7" x 6.1" inches



## **PMXAKB1000** 1000 Watt Bluetooth Karaoke Mixer with Two Microphone Inputs, RCA Audio & Video, Rack Mountable

- Bluetooth Wireless Music Streaming
- Works with Virtually Any Bluetooth Enabled Device
- (iPhone, Android, Smartphones, Tablet, MP3 player, TV, PC etc.)
- Mix Two Microphones with Music from Bluetooth or RCA Inputs for Karaoke Fun
- Two Switchable RCA Audio and Video Inputs
- Three RCA Audio Outputs (Record, Line and Microphone)
- Two RCA Video Inputs/Outputs to Connect Video Display, TV or Monitor
- Master Volume, Balance and Low/Mid/High Frequency Controls
- Master Hi/Lo Frequency, Repeat and Delay Echo Controls
- Master Microphone Volume Controls
- Remote Control for Key Sound Effects
- 110V - 220V Compatible
- Dimensions: 16.5" (W) 13.5" (L) 5.5" (H)



## **PSUFM837BT** Dual 800 Watt Disco Jam Powered Two-Way PA Bluetooth Speaker System w/ USB/SD Card Readers, FM Radio, 3.5 mm AUX Input (Active & Passive Speakers)

- All-in-One Entertainment Sound System
- Built-in Bluetooth for Wireless Audio Streaming
- Works with All of Your Favorite Bluetooth Devices (iPhones, Androids, Smartphones, iPads, Tablets, PC, etc.)
- Dual Speaker Towers (One Active, One Passive)
- 8" Woofer and 3.5" Piezo Tweeter
- Fully Featured 3-Channel Mixer
- AUX (3.5mm) Line Input (Compatible with Devices with Headphone Outputs)
- Two 1/4" Microphone Inputs
- RCA Stereo Input and Output
- Speaker Output for Passive Speaker
- USB Flash & SD Card Readers with FM Radio
- USB Slot Doubles as a Device Charging Port
- Display Screen Shows Number of Songs, Play Time and FM Radio Frequency
- Master Volume Control
- Built-in Crossover Network
- Ported Enclosure for Added Bass Response
- 35mm Speaker Stand Mount
- Heavy Duty Handles For Transporting
- Technical Specs: Power Handling: 800 Watts Peak Power/400 Watts RMS @4 Ohm
- Woofer Magnet Weight: 10 oz.
- Sensitivity (1W/1M): 90dB
- Crossover Frequency: 3.5kHz
- Frequency Response: 20Hz-20kHz
- Crossover Frequency: 3.5kHz
- Dimensions: 20.3" (H) x 19.7" (W) x 12.6" (D)
- AC 110/220V Power Switch



## **PDA5BU** 200 Watts Bluetooth Stereo Amplifier w/ AM/FM, USB/SD Flash Drive, Remote and Blue LCD Screen

- 200 Watts Stereo Amplifier has Bluetooth Wireless Music Streaming Compatible with iPhones, Androids, Tablets, PC, etc
- 200 Watts Peak Power @ 4 ohm, THD Less than 0.1%
- AM/FM Stereo Receiver with Auto Scan and Frequency Display Allows You to Listen to All Your Favorite Radio Broadcasts
- Tuner has Built In Antenna and 60 Radio Station Memory Pre-Set
- USB/SD Flash Drive Memory Compatible
- USB Port for Mp3 and Also Recharges Your Cellular Phone
- LED Screen Shows AM/FM Frequency, and Mp3 Song Number and Play Time
- Bluetooth Function With Operation Range 65 feet
- 1/8" AUX Input with Cable and Two 1/4" mic Inputs
- RCA Input and RCA Line Out
- Full Function Blue LED Control Panel w/ Pre/Next/Play/Pause for USB/SD
- Full Function Remote Control
- Power Supply: 110V/220V
- Dimensions: 10.5" x 8.8" x 2.8" inch
- Weight: 5.5 lbs.



## PT265BT

### 200 Watt Bluetooth Digital Receiver Amplifier with AM/FM Radio & Two Microphone Inputs for Karaoke Mixing

- Bluetooth Wireless Music Streaming
- Works with Virtually Any Bluetooth Enabled Device (iPhone, Android, Smartphones, Tablet, MP3 player, TV, PC etc.)
- Mix Two Microphones with Music from Bluetooth, AM/FM or Aux In for Karaoke Fun
- AM/FM Radio Receiver with 50 Station Memory Presets
- Digital LCD Display Screen
- Main Channel Full Volume, Balance, Treble and Bass Level Controls
- Separate Volume, Bass, Treble and Echo Controls for the Microphone Inputs
- Two Microphone Inputs Combined with Three Stereo RCA Input Sources
- Full Function Remote Control Included
- Two Pairs of Left and Right Stereo Speaker Outputs with A/B Speaker Selector Switch
- Main Channel Peak Power Output 100 Watts x 2
- Normal Load Impedance: 8 Ohm
- S/N Ratio, Amplifier: >76dB, Amplifier with Microphone: >71dB
- Frequency Response: (40Hz-15kHz) 2dB
- Power Compatibility: 110 Volts 60 Hz/ 220 Volts 50 Hz
- Dimensions: 19"(W) 11.4"(D) 4.7"(H)



## PT592A

### Bluetooth 5.1 Channel HDMI Digital Stereo Receiver Amplifier with AM/FM Radio, 4 HDMI Inputs, 2 Mic Inputs, 300 Watt Output

- 5.1 Channel Home Theater Amplifier
- Built-in Bluetooth for Wireless Audio Streaming
- Compatible with Virtually All Bluetooth Devices (iPhone, Android, Smartphone, iPad, Tablet, PC, etc.)
- (2) MIC Inputs - Treble, Bass and Independent Volume Mic Controls
- AM/FM Radio - 20 Station Memory Presets
- VFD Digital Display Panel with Input Selector
- Front-Facing Easy Touch Digital Control Center
- (4) HDMI Inputs & (1) HDMI Output
- (3) Pairs of RCA Audio Input Connector Jacks
- Output Terminals: Front (L) and (R), Center, Surround (L) and (R), Subwoofer
- (Works with Video Game Consoles, DVD, Blu-ray Players, TV, PC, etc.)
- Full Function Remote Control Included
- Headphone Jack Technical Specs: 2160p HDMI V 1.4 with 3D Pass Through Technology
- Bluetooth Profile Support: V2.1 and A2DP
- Total Output Power: 300 Watt (4 Ohm)
- Over Current, Voltage & Speaker Short Protection
- Power: AC 115V 60Hz/230V 50Hz
- Dimensions: 17.0" (W) x 12.5" (D) x 4.5" (H)



## PTCD54UB

### Bluetooth Vintage Style Turntable with AM/FM Radio, CD & Cassette Players, USB Flash Recording & Slide-Out iPod/MP3 Dock

- Classic Style Turntable with Modern Technology
- Built-in Bluetooth for Wireless Music Streaming
- Compatible with All of Your Favorite Bluetooth Devices (Works with iPhone, Android, Smartphone, iPad, Tablet, PC, etc.)
- Pop-Out iPod/MP3 Dock with 3.5mm Connector Cable
- Front Loading Single CD Tray & Slot-in Cassette Deck
- USB Record Function: Saves Vinyl Record, CD, Cassette or Connected Device Recordings to Your Connected USB Flash Drive
- Ability to Play MP3 Files via USB Flash Drive
- Compatible with CD/MP3/CD-R/CD-RW Discs
- Collapsible Lid Reveals Vinyl Record Player
- AM/FM Radio with Rotary Tuner
- 3 Speed Turntable 33-1/3, 45, 78 RPM
- Auto-Stop Function Increases Life of the Needle
- Built-in Stereo Speakers
- Ceramic Cartridge
- Weight: 22 Pounds
- Unit Dimensions: 20.08" x 13.39" x 8.86"
- Color: Brown Wood (Maple Burst)



## PTT30WD PTT30BK

### Bluetooth Vintage Classic Style Turntable Wireless Music Streaming, AM/FM Radio, USB Record Ability, AUX (3.5mm) Input

- Classic Style Turntable with Modern Technology
- Built-in Bluetooth 3.0 for Wireless Music Streaming
- Compatible with All of Your Favorite Bluetooth Devices (Works with iPhone, Android, Smartphone, iPad, Tablet, PC, etc.)
- Aux (3.5mm) Input Connector Jack
- AM/FM Radio
- Easy-to-Use with Rotary Controls
- USB Record Ability: Connect to PC (Save and Edit Music)
- Auto-Stop Function Increases Life of the Needle
- Variable Speed Selector: 33-1/3, 45, 78 RPM
- Built-in Stereo Speakers
- RCA Output Connector Jacks
- Ceramic Cartridge with Collapsible Lid Case Design
- Includes: USB Connection Cable, RCA to 3.5mm Connection Cable and AC Power Adaptor
- Unit Dimensions: 20.08" x 13.39" x 8.86"
- AC Power 120V





## PWMAB210BK

## PWMAB210BZ

## PWMAB210OR

## PWMAB210ORD



### Boom Rock Bluetooth Karaoke Speaker and Recording System, Built-in Rechargeable Battery, Wireless Microphone, USB/SD Card Readers, FM Radio and Remote Control

- All-in-One Karaoke Speaker System
- Records Your Voice and the Music at the Same Time
- Built-in Bluetooth for Wireless Audio Streaming
- Works with All of Your Favorite Bluetooth Devices (iPhone, Android, Smartphone, Tablet, etc.)
- USB Flash and SD Memory Card Readers
- FM Radio and LCD Digital Display
- Built-in Rechargeable Battery (3 Hour Life)
- 1/4" Mic Input - 1/4" Audio Output - AUX (3.5mm) Input
- Includes VHF Wireless Handheld Microphone and Remote Control
- Volume, Bass, Treble, Echo, Mic Volume & Gain Controls
- Portable and Powerful Technical Specs: 200 Watt Max Power Output
- 4 Ohm, Class-D Circuit Design
- 6.5" Coaxial Speaker
- Bluetooth Operation Range: 65 Feet
- Frequency Response: 20-20kHz
- 110-220V AC Adapter

## PDIC56

5.25"

## PDIC66

6.5"

## PDIC86

8"

## PDIC106

10"

### In-Wall / In-Ceiling Dual Stereo Speakers, 2-Way, Flush Mount, White, Sold as Pairs



- In-Wall / In-Ceiling System
- 2-Way Stereo Sound Speakers
- Includes (2) Speakers
- High Compliance Polymer Tweeter
- Polypropylene Cone with Rubber Edge
- Frequency Response: 80Hz-20kHz
- Impedance: 8 Ohms
- Sensitivity: 88 dB
- Mounts Flush on Walls or Ceilings
- Built-in Electronic Crossover Network
- Environmentally Friendly ABS Construction
- Perfect for Custom Installations & Applications
- Includes Changeable Round & Square Stain Resistant Grills
- Cut-Out Template for Easy Installation

## PHRCA2

### Dual Stereo RCA Wall Plate

- Double RCA Wall Plate
- No soldering required - plug and play
- Fits Standard J-Box (Electrical Outlet Box)
- Dual threaded gold plated terminals
- Attractive Decora style white wall plate



## PHCT75

### Visual Fault Locator (VFL) Cable Tester Detector Meter with Universal Connector for Fiber Optic Cables, Networks, Systems

- Lightweight, Compact & Portable - Easy Operation
- Effectively Locates Problem Areas in Fiber Optic Systems
- Localizes Damage, Bends & Break Failures
- (2) Modes of Light Detection: Continuous & Flashing
- Continuous Mode: Light Remains On When Detecting
- Flashing Mode: 1Hz Flashing Light Blinks When Detecting
- Low Voltage LED Battery Indicator
- 2.5mm Universal Connector
- Battery Operated: Requires (2) 'AAA'

- Batteries Technical Specs:
- Wavelength Measurement: 650nm +/- 10nm
  - Output Power: 1mW (Optional)
  - Optical Fiber Connector: Gm 2.5mm
  - Flicker Frequency Rate: 1Hz
  - Operating Temperature: 14 to 113 °F
  - Operating Humidity: 30 to 90%
  - Size: 4.64" x 1.32" x 0.75"



## PCMTV25

### Universal Folding Hide-Away TV Ceiling Mount Bracket Fits Virtually All 17" - 37" TVs (Flat Panel HDTV, LCD, LED, Plasma and Smart TVs)

- Fits Virtually Any 17" to 37" inch Television
- Mount on Flat or Pitched Ceilings
- Universal VESA Mount Compatible
- Folds to Hide-Away Screen When Not in Use

- Folds: 0° - 90° Degrees
- Provides Safe, Durable & Reliable TV Mounting
- Maximum Weight Capacity: 44 lbs.
- Includes All Necessary Mounting Hardware and Brackets



## PCTVM15

### Universal Tilt and Swivel Adjustable TV Ceiling Mount Bracket Fits Virtually All 23" - 42" TVs (Flat Panel HDTV, LCD, LED, Plasma and Smart TVs)

- Fits Virtually Any 23" to 42" inch Television
- Universal VESA Mount Standard Compatibility
- Bracket Design Mounts to Ceilings
- Ceiling to TV Height: 19" to 33" inches
- Tilt Adjustable: from -20 to +20 Degrees

- Swivel Adjustable: 180 Degrees
- Provides Safe, Durable & Reliable TV Mounting
- Load Capacity: 66 lbs. (30 kg.)
- Includes All Necessary Mounting Hardware and Brackets



## PCTVM18

### Universal TV Ceiling Mount Bracket with Adjustable Height, Swivel and Tilt Fits Virtually All 37.0" to 70.0" TVs (Flat Panel HDTV, LCD, LED, Plasma and Smart TVs)

- Fits Virtually Any 37.0" to 70.0" inch Television
- Universal VESA Mount Compatible
- Ability to Mount on Flat or Pitched Ceilings
- Telescoping Arm Length: 41.3" to 61.4" (Adjustable)
- Tilt Adjustable: -15 Degrees

- Swivel Adjustable: 360 Degree
- Internal Cable Routing and Cable Management
- Provides Safe, Durable & Reliable TV Mounting
- Includes All Necessary Mounting Hardware and Brackets
- Maximum Weight Capacity: 110.0 lbs.



## **PSPADLK8**

### **Universal Tamper-Proof Anti-Theft iPad Tablet Kiosk Stand Holder for Public Display with Cable Management, Fits Virtually All Tablets 7.9 – 10.1", Swivel, Rotation and Tilt Adjustable and Included Wall Mount (Compatible with iPads Mini/1/2/3/4/Air)**

- Size Adjustable: Fits All Tablets 7.9" to 10.1"
- Safely & Securely Put Your Device on Display
- Compatible with iPads Mini, 1, 2, 3, 4 & Air
- Ultra-Strong Anti-Theft Laptop-Styled Lock Included
- Multi-Mount: Mount it on any wall, table, desk, etc.
- Install it on Desktops, Countertops, Tables, Counters, etc.
- (Works with All iPads, Kindle, Nexus, Galaxy, Samsung, Android Tablets, etc.)
- Perfect for the Office or Public Applications
- Swivel Adjustment: 330 Degree
- Tilt Adjustment: 140 Degree
- Rotation Adjustment: 360 Degrees
- Landscape or Portrait Device Mounting
- Rugged & Durable Construction
- Internal Cable Routing and Cable Management
- Includes All Necessary Mounting Hardware, Wall Mount, Brackets and Lock
- Pole Height: 8.4" inch
- Base Diameter: 3.4" inch



## **PSPADLK14**

### **Universal Tamper-Proof Anti-Theft iPad Tablet Kiosk Stand Holder for Public Display with Cable Management, Fits Virtually All Tablets 9.7" to 10.1" Tablets, Mounts to Tabletop, Desktops, Counters, etc. (Compatible with iPads 1/2/3/4/Air)**

- Fits Tablets 9.7" to 10.1" inches
- Also Works with iPads 1/2/3/4/Air
- Safely & Securely Put Your Device on Display
- Ultra-Strong Anti-Theft Housing
- (Works with All iPads, Kindle, Nexus, Galaxy, Samsung, Android Tablets, etc.)
- Install it on Desktops, Countertops, Tables, Counters, etc.
- Includes Locking Mechanism and Key
- Tamper-Proof Tablet Security Display
- Rotates 90 Degrees
- Landscape or Portrait Device Mounting
- Rugged & Durable Construction
- Internal Cable Routing & Cable Management
- Includes All Necessary Mounting Hardware and Brackets



## **PSPADLK38**

### **Universal Tamper-Proof Anti-Theft iPad Tablet Kiosk Floor Stand Holder for Public Display with Cable Management, Fits Virtually All Tablets 9.7" to 10.1" Tablets (Compatible with iPad Generations 1, 2, 3, 4 and iPad Air)**

- Fits Tablets 9.7" to 10.1" inches
- Safely & Securely Put Your Device on Display
- Includes Locking Mechanism and Key
- (Works with All iPads, Kindle, Nexus, Galaxy, Samsung, Android Tablets, etc.)
- Compatible with iPad Generations 1, 2, 3, 4 and iPad Air
- Secure Tamper-Proof Tablet Security
- Rotates 90 degrees
- Landscape or Portrait Tablet Mounting
- Rugged & Durable Floor Standing Design
- Internal Cable Routing & Cable Management
- Includes All Necessary Mounting Hardware and Brackets
- Perfect for Office, Lobby, Showroom, Conference Room, Front Desks, etc.



## **PSPADLKW5**

### **Universal Tamper-Proof Anti-Theft iPad Kiosk Multi-Mount Stand Holder (Fits All 2nd, 3rd, 4th and Air Generation iPads) Can be Mounted on Walls, Tables, Desks, etc.**

- Made for All 2nd, 3rd, 4th and Air Generation iPads
- Safely & Securely Put Your Device on Display
- Multi-Mount: Mount it on any wall, flat surface, table, desk, etc.
- Secure Tamper-Proof iPad Security
- Includes Locking Mechanism and Key
- Home Button Accessible
- Landscape or Portrait iPad Mounting
- Internal Cable Routing & Cable Management
- Foam Padding Prevents Device Damage & Scratches
- Includes All Necessary Mounting Hardware and Brackets
- Perfect for Office, Lobby, Showroom, Conference Room, Front Desks, etc.
- Rugged & Durable Construction



## PSAPD12

### Universal Suction Cup Device Holder Windshield Mount Fits iPad, Tablets & Smartphones with Swivel Adjustment and Flexible Gooseneck (Fits Tablets 8.9" – 10.1", Smartphones 3.5" – 5.5")

- Includes (2) Adjustable Size Device Holders
- Universal Holder for Your Tablet, Cell Phone, Smartphone, MP3 Player, etc.
- Works with iPad, iPhone, Android, Smartphones, Kindle, Galaxy, Samsung, Android Tablets & More
- Holds Virtually All Tablets 8.9" €" 10.1"
- Holds Virtually All Smartphones 3.5" €" 5.5"
- Easily Position Your Device in the Desired Viewing Angle
- Quickly Mount & Un-Mount Your Device
- Suction Cup Quickly and Easily Attaches to Windshield or Dashboard
- 360 Degree Swivel Adjustment and Flexible Gooseneck
- Protective Pads to Prevent Damage or Scratches
- Sturdy and Durable Construction
- Provides Safe & Reliable Device Mounting
- No Sagging with Extra Support for Your Tablet
- No Tools Required
- Gooseneck Tube: 13.4" Inches Long



## PLPPADMT20

### Dual Device Holder Universal Stand for Laptops and Tablets, Conveniently Holds 2 Devices with Swivel, Tilt and Rotation Adjustments, Fits Virtually All Laptops 10" to 15.6", Fits Virtually All Tablets 7" to 10.1"

- Perfect for Studio Use €" Dual Holding Arms: Holds (1) Laptop and (1) Tablet
- Safely and Securely Position Both Devices Exactly Where You Want Them
- Padded Clamp Holds on Tightly Without Causing Damage
- Compatible with All Laptops 10" €" 15.6"
- Compatible with All Tablets 7" €" 10.1"
- Works with iPad, Androids, Galaxy, Kindle, Samsungs etc.
- Quickly Mount & Un-Mount Your Device
- Flexible Swivel Base and Movable Swinging Arms
- Securely Holds onto Devices with Padded Clamping Brackets
- Durable and Rugged Construction
- Provides Durable, Reliable & Convenient Device Control
- Tablet Holders Swivel 180° and Tilts 80° degrees
- Laptop Holder Tilts ±25° and Rotates 360° degrees



## PRJCM12LK

### Universal Tamper-Proof Anti-Theft Secure Projector Holder and Ceiling Mount with Rotation and Tilt Adjustments

- Universal Mounting Patterns
- Compatible with Virtually All Projectors
- Includes Anti-Theft Padlock Security
- Perfect for the Home, Office or Classroom
- Securely Hold Projectors up to 44 lbs. (20kg)
- Rotates 360° Degrees in All Directions
- Tilts 10° Degrees Up and Down
- Provides Safe, Durable & Reliable Projector Mounting
- Does not Interfere with Ventilation or Cooling Fans
- Includes All Necessary Mounting Hardware, Brackets and Padlock



## PSTND19

### Universal Heavy Duty Speaker Bracket Stands with Adjustable Height

- Includes (2) Speaker Bracket Mount Stands
- Quickly and Easily Adjust the Height of Mounted Speakers
- Height Adjustable from 26.8" to 43.3" inches
- Versatile Stands: Perfect for Beginner & Professional Applications
- Position Speakers for Optimum Sound Performance
- Includes Universal Speaker Mounting Bracket
- Works with All Speakers with Threaded Insert
- Rugged & Durable Steel Construction
- Internal Cable Routing & Cable Management
- Includes All Necessary Mounting Hardware and Brackets
- Max Load Weight: 9.9 lbs.





## PRJLE78

### Home Theater Multimedia Digital LED Projector w/2800 Lumens Brightness and HD 1080p Support

- Brightness: 2800 Lumens
- LCD Native Resolution 1280 x 800 Support 1080p
- Image Size: 50 to 200 inches
- Built In Stereo Speakers
- Full Function Remote
- LCD Panel: 5.8" TFT
- Contrast Ratio: 1500: 1
- Video Input: Ypbpr, VGA, 2 x HDMI and 2 x USB
- USB Flash Drive Compatible with the Following File Formats:
  - .avi, .mpg, .dat, .rmvb, .mov, .mp3, .wma, .m4a, .jpg, .bmp, .png

- Audio Input: Stereo RCA
- Audio Output: Stereo RCA
- Lens Aperture: 3.8
- Lens Focus: 185mm
- Lamp LED 150 Watts
- LED Life: 50,000 hours
- Keystone: + 15 degrees
- Power: AC 110-240 Volts/50-60 Hz
- Power Consumption: 180 Watts
- Supports International Languages
- Dimensions: 13.2 x 10.4 x 4.6 inches
- Weight: 7.7 lbs.



## PRJWM8

### Universal Projector Holder Wall Mount with Telescoping Length, Angle and Tilt Adjustment

- Universal Mounting Patterns
- Compatible with Virtually All Projectors
- Securely Holds Devices up to 44 lbs. (20kg)
- Telescoping Length Adjustment
- Length Mounting Arm Extends from Wall: 16.9" €" 25.6" inches
- Safely Conceals and Protects Cables

- for a Clean Installation
- Perfect for the Home, Office or Classroom
- Horizontal, Vertical (Angle and Tilt) Adjustments
- Durable and Polished Mounting Assembly Kit
- Does not Interfere with Ventilation or Cooling Fans
- Provides Safe, Durable & Reliable Projector Mounting
- Includes All Necessary Mounting Hardware and Brackets



## PFSHCMR1

### Underwater Waterproof Fishing Camera and Video Record System with Night Vision Sensors, 30 Mega Pixels and 3.5" inch LCD Display

- Take Pictures and Record Videos Underwater in Color
- Drop the Camera in the Water and See Where the Fish are Hiding
- Waterproof Marine Grade Camera
- 3.5" inch Digital LCD Display
- Instantly Preview your Videos and Picture on the LCD Monitor
- Durable, Reinforced & Submersible Wired Camera
- Infrared LED Night Vision Sensors Illuminate Dark Environments
- Camera Cable Sinks up to 15 Meters Deep
- Micro SD Memory Card Slot
- Easily Save Files and Transfer to PC or Mac
- System Includes Wired Camera, LCD Display, Display Holder, Pole Mounting Brackets and Charging Cable
- Conveniently Mounts to Your Fishing Rod
- Brightness, Contrast & Color Display Adjustments
- Built-in Rechargeable Battery: 3000mAh (3.7V Lithium)
- Up to 8 Hour Battery Life

- Observe Underwater Fish Behavior and Environments Camera: 30 Mega Pixel Wide Angle Lens
- Built-in IR LED Night Vision Illumination
- Resolution: 640 x 380
- Image Sensor: 1/4" inch
- Size: 0.8" x 1.0" inches
- Weight: 0.35 g
- Operating Temperature: -10 to 40 Celsius
- LCD Display: Screen Size: 3.5 inches
- 4X Digital Zoom Function
- Resolution: 960 x 240
- Backlight Brightness: 300cd
- Protective Flip-Open Cover
- Universal Threaded Mounting Insert
- Easy Operation Touch Button Controls
- Display Housing (L x W x H): 4.2" x 3.0" x 1.9" inches
- Weight: 150 g



## PWSIC25

### Universal Waterproof Pouch, Keeps Your Device Dry (Works with iPads, Tablets, iPhones, Androids, Smartphones, MP3 Players, etc.) with Headphone Jack

- Quickly and Easily Add Waterproof Protection
- Fits All Electronic Devices up to 7.0" Wide, 10.3" Tall, 0.4" Thick (iPads, Kindles, Tablets, iPhones, Androids, Smartphones, MP3 Players, etc.)
- Works with Tablets, Smartphones & MP3 Players
- Marine Grade IPX7 Waterproof & Dustproof Bag
- Safe in Water Depths up to 1 Meter/3.3 Feet

- Built-in 3.5mm Headphone Jack
- Engineered Plastic Allows Use of Touch Screen While Inside
- Includes Shoulder Strap for Easy Carrying
- Built-in Fold-Out Table Stand
- Overall Dimensions (W x H x D): 8.5" x 13.0" x 0.8" inches



## **PWBH18BK** Bluetooth Water Resistant Headphones with Built-in Mic for Hands-Free Call Answering (Black)

- Built-in Bluetooth and Microphone
- Enjoy Wireless Music Streaming and Call Answering
- Works with all of Your Favorite Bluetooth-Enabled Devices
- (iPhone, Android, Smartphones, iPad, Tablets, MP3 Players, etc.)
- Marine Grade IP64 Water Resistant Construction
- Built-in Rechargeable Battery (7 Hour Average Life)
- Unlock more possibilities: Can be Paired with 2 Mobile Phones
- High-Fidelity Sound Reproduction
- Includes Additional Earbuds<lib>Technical Specs: Bluetooth Range: 10 Meters

- Bluetooth V4.0 +EDR A2DP, AVRCP
- Continuous standby time: 180 hours
- Continuous transmission time: 8 hours
- Continuous talk/Listening time: 5 hours
- Distortion:<0.1%
- Battery: Li-Polymer 3.7V / 80mAh<10uA
- Signal-to-Noise Ratio: >70 dB
- Frequency Response: 20Hz-20KHz
- Headset Impedance / Output:300 0.02mm, dia. 10mm x 2
- Operating Temperature: 0 °C to €" 40 °C
- Weight : 23g
- Product size: 1.6"(W) x 2.5" (H) x 0.3" (D)



## **PWBH18BL** Bluetooth Water Resistant Headphones with Built-in Mic for Hands-Free Call Answering (Blue)

- Built-in Bluetooth and Microphone
- Enjoy Wireless Music Streaming and Call Answering
- Works with all of Your Favorite Bluetooth-Enabled Devices
- (iPhone, Android, Smartphones, iPad, Tablets, MP3 Players, etc.)
- Marine Grade IP64 Water Resistant Construction
- Built-in Rechargeable Battery (7 Hour Average Life)
- Unlock more possibilities: Can be Paired with 2 Mobile Phones
- High-Fidelity Sound Reproduction
- Includes Additional Earbuds<lib>Technical Specs: Bluetooth Range: 10 Meters

- Bluetooth V4.0 +EDR A2DP, AVRCP
- Continuous standby time: 180 hours
- Continuous transmission time: 8 hours
- Continuous talk/Listening time: 5 hours
- Distortion:<0.1%
- Battery: Li-Polymer 3.7V / 80mAh<10uA
- Signal-to-Noise Ratio: >70 dB
- Frequency Response: 20Hz-20KHz
- Headset Impedance / Output:300 0.02mm, dia. 10mm x 2
- Operating Temperature: 0 °C to €" 40 °C
- Weight : 23g
- Product size: 1.6"(W) x 2.5" (H) x 0.3" (D)



## **PWBH18SL** Bluetooth Water Resistant Headphones with Built-in Mic for Hands-Free Call Answering (Silver)

- Built-in Bluetooth and Microphone
- Enjoy Wireless Music Streaming and Call Answering
- Works with all of Your Favorite Bluetooth-Enabled Devices
- (iPhone, Android, Smartphones, iPad, Tablets, MP3 Players, etc.)
- Marine Grade IP64 Water Resistant Construction
- Built-in Rechargeable Battery (7 Hour Average Life)
- Unlock more possibilities: Can be Paired with 2 Mobile Phones
- High-Fidelity Sound Reproduction
- Includes Additional Earbuds<lib>Technical Specs: Bluetooth Range: 10 Meters

- Bluetooth V4.0 +EDR A2DP, AVRCP
- Continuous standby time: 180 hours
- Continuous transmission time: 8 hours
- Continuous talk/Listening time: 5 hours
- Distortion:<0.1%
- Battery: Li-Polymer 3.7V / 80mAh<10uA
- Signal-to-Noise Ratio: >70 dB
- Frequency Response: 20Hz-20KHz
- Headset Impedance / Output:300 0.02mm, dia. 10mm x 2
- Operating Temperature: 0 °C to €" 40 °C
- Weight : 23g
- Product size: 1.6"(W) x 2.5" (H) x 0.3" (D)



## **PWBH18WT** Bluetooth Water Resistant Headphones with Built-in Mic for Hands-Free Call Answering (White)

- Built-in Bluetooth and Microphone
- Enjoy Wireless Music Streaming and Call Answering
- Works with all of Your Favorite Bluetooth-Enabled Devices
- (iPhone, Android, Smartphones, iPad, Tablets, MP3 Players, etc.)
- Marine Grade IP64 Water Resistant Construction
- Built-in Rechargeable Battery (7 Hour Average Life)
- Unlock more possibilities: Can be Paired with 2 Mobile Phones
- High-Fidelity Sound Reproduction
- Includes Additional Earbuds<lib>Technical Specs: Bluetooth Range: 10 Meters

- Bluetooth V4.0 +EDR A2DP, AVRCP
- Continuous standby time: 180 hours
- Continuous transmission time: 8 hours
- Continuous talk/Listening time: 5 hours
- Distortion:<0.1%
- Battery: Li-Polymer 3.7V / 80mAh<10uA
- Signal-to-Noise Ratio: >70 dB
- Frequency Response: 20Hz-20KHz
- Headset Impedance / Output:300 0.02mm, dia. 10mm x 2
- Operating Temperature: 0 °C to €" 40 °C
- Weight : 23g
- Product size: 1.6"(W) x 2.5" (H) x 0.3" (D)

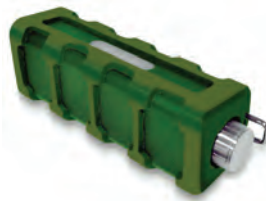




**PWPBT05BK****PWPBT05BL****PWPBT05GR****PWPBT05PU**

### **Bluetooth Waterproof Shower Speaker & Hands Free Speaker-Phone with Built-in Microphone & FM Radio**

- Bluetooth Wireless Music Streaming & Call Answering
- Built-in Microphone Allows you to take Calls Hands-Free
- Works with All Your Favorite Bluetooth Devices (iPhone, Android, Smartphone, iPad, Tablet, MP3 Player, PC, etc.)
- Waterproof Marine Grade Construction
- Built-in Rechargeable Battery and USB Charging Cable Included
- FM Radio with Auto Search Tuning
- Easy Hang Hook for Listening Anywhere
- Easy to Use Button Controls
- Full Range Stereo Sound
- Battery: Lithium 3.7V 500mah
- Charge Power: 5V 500mA
- Bluetooth Range: >32 feet
- Bluetooth Version: V2.1+EDR
- Supported Bluetooth Profile: HSP, HFP, A2DP, AVRCP

**PWPBT15BK****PWPBT15BL****PWPBT15GN****PWPBT15OR****PWPBT15W**

### **Jam Tunes Box Rugged & Splash Proof Bluetooth Speaker and Hands Free Speaker-Phone with Aux In**

- Bluetooth Wireless Music Streaming & Call Answering
- Built-in Microphone Allows you to take Calls Hands-Free
- Works with All Your Favorite Bluetooth Devices (iPhone, Android, Smartphone, iPad, Tablet, MP3 Player, PC, etc.)
- Aux-In (3.5mm) Jack: Connect
- Additional Audio Devices
- Rubberized, Water & Shock Resistant Design
- Easy-Push Button Controls
- Full Range Stereo Sound & Bass Output
- Built-in Rechargeable Battery with 6 Hour Average Life
- Battery: Lithium 3.7 Volts 400mA
- Includes USB Charging Cable
- Metal Hook Loop for Easy Hanging
- Bluetooth Version: 3.0+EDR
- Supports Bluetooth Profiles: HSP, HFP, A2DP and AVRCP
- Bluetooth Range: 33 feet
- Frequency Response: 60 - 20,000Hz
- Impedance: 4 Ohm
- Dimensions (W x L x H): 2.3" x 7.3" x 2.7"

**PWPBTN65BK****PWPBTN65BL****PWPBTN65GN****PWPBTN65OR****PWPBTN65WT**

### **Sound Box Splash Rugged & Splash-Proof Bluetooth Marine Grade Portable Wireless Speaker with NFC Pairing and AUX Input**

- Bluetooth wireless streaming audio
- Works with virtually any Bluetooth enabled device (Smartphone, Tablet, PC, MP3 player, etc.)
- NFC (Near Field Communication): Easily pairs to Android devices
- Marine-Grade IPX4 splash proof & shock resistant design
- 3.5mm (Aux Input) Jack: Connect & play
- music from additional devices
- Built-in rechargeable battery
- Easy-push button controls
- Impressive bass output
- Dedicated full-ranged stereo speakers
- Includes USB charging cable
- Metal hook loop for easy attachment to karabiner, chain, or wire
- Battery Life: 6 Hours
- Battery Type: Lithium 1400mA
- Frequency Response: 60 - 20,000Hz
- Impedance: 4 Ohm
- Dimensions (L x W x H): 8.3" x 2.5" x 2.7"
- Weight: 1.9 lbs.

## PSR14

### Splash Proof Water Resistant Mini Digital AM/FM Radio Alarm Clock with LCD Display and AUX (3.5mm) Input

- AM/FM Digital Tuner Radio
- Marine Grade IPX4 Water Resistant Housing
- Aux (3.5mm) Input for Connecting External Devices (Works with iPod, MP3 Players, iPhone, Android, Smartphones, Tablets, etc.)
- LCD Display with Alarm Clock
- Built-in Speaker
- Adjustable Volume Control
- Foldable Handle for Easy Hanging

- Frequency Response: 150Hz €" 3kHz
- Radio Frequency Range: AM 540 €" 1600 kHz; FM 88 €" 108 MHz
- Unit Dimension: 5.0" (W) x 5.5" (H) x 2.7" (D) inches
- Battery Powered: 2 x €"AAA€"™ (for clock) and 2 x €"AA€"™ (for radio)
- Compact Size: Perfect for any room at home or in the office
- Batteries Not Included



## PSR7

### Splash Proof Water Resistant Mini AM/FM Radio with Hanging Strap, Rotary Volume Control, Manual Tuner

- AM/FM Manual Tuner
- Marine Grade IP44 Water Resistant Housing
- Built-in Speaker
- Hanging Strap Design
- Rotary Volume Control
- Built-in Analog Tuner with Antenna

- Battery Compartment with Lock
- Radio Frequency: AM: 540-1600 KHz, FM: 88-108MHz
- Requires 2 x 'AA' Batteries (Not Included)
- Voltage: DC 3V
- Dimensions: 3.5" (W) x 3.5" (H) x 1.7" (D) inches



## PLATV520

### 500 Watts ATV/UTV/Jet Ski/Snowmobile Waterproof Powered Sound System w/ 6.5" 2-Way Stereo Marine Speakers & 3.5mm AUX Input for MP3 Players, Smartphones, etc.

- Dual 6.5" 2-Way Stereo Marine Grade Speaker System
- Built-In 2 Channel Internally Mounted Amplifier
- 500 Watts (250w x 2) Max Power / 250 Watts (125w x 2) RMS Power
- 3.5mm / 1/8" Stereo Audio Input Jack (for use with MP3 Players, Smartphones, Cell phones, etc.)
- Easily Connect to the Audio Output of External

- Audio Device and Stream Music
- Waterproof Housing Speaker Housing
- Rugged Universal Heavy Duty Mounting System
- Leather Bag Included for Cell Phone/ MP3 Players
- Plug & Play For Easy Installation
- Speaker Housing Dimensions: 26.55" (W) x 10.35" (H) x 7.75" (L)



## PLATV550BT

### 500 Watts ATV/UTV/Jet Ski/Snowmobile Waterproof Powered Sound System w/ 6.5" 2-way Stereo Marine Speakers & Built in Leather Case suitable for MP3, Mobile Phone, & Aux 3.5mm Devices & Bluetooth Wireless Streaming

- Bluetooth 3.0 Technology
- Dual 6.5" 2-Way Stereo Marine Grade Speakers
- Built-In 2 Channel Internally Mounted Amplifier
- 500 Watts (250w x 2) Max Power / 250 Watts (125w x 2) RMS Power
- Waterproof Housing, Bluetooth Console and in-line Volume Control
- 3.5mm / 1/8" Stereo Audio Input Jack (for use with MP3 Players, Smartphones, Cell phones, etc.)
- Easily Connect to the Audio Output of External Audio Device and Stream Music

- Automatic Bluetooth Activation with System Power On
- Automatic Bluetooth Disconnection with Aux-in Connection
- Rugged Universal Mounting Heavy Duty Speaker Housing
- Leather Bag Included for Cell Phone/MP3 Players
- Plug & Play For Easy Installation
- Speaker Housing Dimensions: 26.55" (W) x 10.35" (H) x 7.75" (L)
- Bluetooth Console Dimension : 1.65" (W) x 0.87" (H) x 2.36" (L)





## **PLATVB84A** 800 Watts Motorcycle/ATV/Snowmobile Mount with Dual Handle-bar Mount Chromed Plastic Weatherproof 3-Inch Speakers W/Amplifier Built-In W/Bluetooth In-Line Control for i-phone, i-pad, i-pad mini, Cell Phone Etc.

- 400 Watts X 2 channel micro amplifier built in the speaker enclosure with Wire harness
- Pair of handlebar Mounting clamps
- Chrome stainless universal handlebar audio mount
- Easy Chrome Stainless Mounting Brackets and Accessories included
- Environment resistance and water proof Bluetooth and in-line volume control console with 3.5mm Stereo Input Jack, Easy Connection to the Output of Other Audio Devices
- Works with iPhone/Smartphones, iPod/MP3 Players, Cell Phones, etc.
- 3" Chromed Plastic Bullet Speaker with Supreme High Temperature Voice Coil
- Strontium Magnet Structure
- Bluetooth 3.0 technology
- Bluetooth auto connected while power on
- Bluetooth auto disconnected while Aux-in (3.5mm connector)
- Easy and quick installed handle-bar mount bracket is included
- Speaker Dimension: 4.21"(W) x 4.21"(H) x 4.61"(L)
- Bluetooth console Dimension: 2.09"(W) x 0.83"(H) x 3.17"(L)



## **PLUTVA102** 2 Channel Waterproof 4" UTV/ATV/Snowmobile/Marine Amplified Speaker System

- One Pair 4" 2-Way Marine Speaker:
- 4" High Quality Poly Injection Cone
- Butyl Rubber Surround
- Shinny Black Plastic Enclosure
- 1" High Temperature KEISV Voice Coil
- 1" PEI Neodymium Dome Tweeter
- 100 Watts RMS / 200 Watts Peak
- Frequency Response: 100-20KHz
- Impedance: 4 Ohms 2 Channel Waterproof Marine Power Amplifier
- 2 x 100 Watts RMS at 4 Ohms
- 2 x 200 Watts Max at 4 Ohms
- Anti-Thump Turn-On
- Soft Turn On/Off
- RCA Line Input
- Volume Gain Remote Control
- T.H.D:<0.05%
- S/N Ratio: >95dB
- Channel Separation: >65dB
- Frequency Response: 10Hz- 30kHz
- Fuse : 1 x 10A
- Dimensions: 5.12"L x 4.29"W x 1.89"H
- Accessories: iPod / MP3 Waterproof 3.5mm Stereo to RCA Adaptor
- Remote control for Volume Gain
- Mounting accessories are included



## **PLUTVA104BT** 4 Channel Waterproof 4" UTV/ATV/Snowmobile/Marine Amplified Speaker System with Bluetooth Audio Interface

- Two Pair 4" 2-Way Marine Speaker:
- 4" High Quality Poly Injection Cone
- Butyl Rubber Surround
- Shinny Black Plastic Enclosure
- 1" High Temperature KEISV Voice Coil
- 1" PEI Neodymium Dome Tweeter
- 100 Watts RMS / 200 Watts Peak
- Frequency Response: 100-20KHz
- Impedance: 4 Ohms 4 Channel Waterproof Marine Power Amplifier
- 4 x 100 Watts RMS at 4 Ohms
- 4 x 200 Watts Max at 4 Ohms
- Anti-Thump Turn-On
- Soft Turn On/Off
- RCA Line Input
- Volume Gain Remote Control
- T.H.D:<0.05%
- S/N Ratio: >95dB
- Channel Separation: >65dB
- Frequency Response: 10Hz- 30kHz
- Fuse : 1 x 10A
- Bluetooth 3.0 Technology
- Bluetooth Auto Connected While Power on
- Bluetooth Auto Disconnected While Aux-in (3.5mm Connector)
- Easy and Quick Installed Handle-bar Mount Bracket is Included
- Bluetooth Console Dimension: 2.09"(W) x 0.83"(H) x 3.17"(L)
- Amplifier Dimensions: 5.9"L x 4.29"W x 1.89"H
- Accessories: iPod / MP3 Waterproof 3.5mm Stereo to RCA Adaptor
- Remote Control for Volume Gain
- Mounting Accessories are Included



## **PLMP5B2** FM Radio Transmitter with USB & Micro SD Card Readers for MP3/WMA Playing, USB Charging Port & AUX Input

- Built-In 206 Channel FM Modulator (87.5-108MHz)
- USB Flash and Micro SD Card Reader
- Quickly Plug-in and Play Your MP3/WMA Files
- AUX Input (3.5mm Jack) for Connecting Additional Devices
- Selectable EQ Settings: Natural, Rock, Pop, Classic, Jazz
- Four Loop modes: Normal, Random, Single Loop, & Continuous Loop
- Wireless Full Function Remote Control
- Flexible Metallic Hose Can bend and Be Adapted
- Large LCD Screen Display with Large Button Controls
- Power Supply: Draws power from car lighter (12-24V DC power)



## **PLCM17BC** Waterproof License Plate Mount Rear View Backup Color Camera, Parking Assist Distance Scale Lines, Night Vision Illumination (Black)

- Night Vision Illumination
- Marine Grade Waterproof Construction
- Extra Wide Range Camera Lens
- Distance Scale Lines Display
- True Color Reproduction
- 0.2 LUX Low Lighting Performance
- Auto White Balance
- Total Pixels: 656 x 492
- Resolution: 420 TV Lines
- Viewing Angle: 170 Degree
- Water & Fog Resistant IP68 Rating
- Video Output: 1.0V PP-75 Ohm
- Power Supply: DC 12V 200mA
- 17' Foot RCA Video Cable (Male to Male Connectors)
- Dimension: 8.03"W x 1.30"H x 1.26"D



## **PHBPB20** Bluetooth Blood Pressure Monitor with Downloadable Health Tracking App

- Wirelessly Measure and Record Your Blood Pressure
- Easy to Use: Insert Your Arm and Press the Button
- Bluetooth 4.0 Smart Low Energy Technology
- Download the 'Pyle Health' App & Connect with Your Smartphone/Tablet
- Clearly Displays Pulse Rate, Systolic and Diastolic Pressures
- Simple Button Operation and One Touch Inflation
- Full Date, Time Setting and 4 Person Memory
- Store and View up to 99 Blood Pressure Readings Per User
- View Average Daily, Weekly & Monthly Blood Pressure Readings
- Alarm Clock Reminder
- Irregular Heartbeat Detection
- Easy to Read Digital LCD Display
- Auto Turn Off Power Saving Feature & Low Battery Indicator
- Battery Requirements: 4 x 'AA' Batteries (Included)
- Or Power By AC 6V Adaptor (Not Included)
- The 'Pyle Health' App: Free to Download
- App Keeps Track, Saves and Charts Your Blood Pressure Readings
- Easily Share Your Results via Text Message or Email
- Share with Family, Friends, or your Doctor
- Quickly Recall Past Readings & Record New Readings
- Compatible with iPhones, iPads & iPods (Works with iOS 6 & Later)
- Compatible with Android Smartphones & Tablets (Works with Android 4.3 and Later)
- Requires Bluetooth Version 4.0 or Later for Compatibility with Your Device



## **PHBPBW40BK** Bluetooth SMART Wrist Blood Pressure Monitor with Free Downloadable Health Tracking App and Adjustable Strap, Safe for All Ages (Black Color)

- Wirelessly Measure and Record Your Blood Pressure
- Accurate, Instant and Reliable Readings
- Easy to Use: Wrap it Around Your Wrist and Press the Button
- Adjustable Strap is Safe and Works for All Ages
- Bluetooth 4.0 Smart Low Energy Technology
- Download the 'Pyle Health' App & Connect with Your Smartphone/Tablet
- The App Keeps Track, Saves and Charts Your Blood Pressure Readings
- Clearly Displays Pulse Rate, Systolic and Diastolic Pressures
- Simple Button Operation and One Touch Inflation
- Store and View up to 99 Blood Pressure Readings Per User
- Easy to Read Digital LCD Display
- Auto Turn Off Power Saving Feature & Low Battery Indicator
- The 'Pyle Health' Free Downloadable App:
- Compatible with Apple iPhones, iPads & iPods (Works with iOS 6 & Later)
- Works with iPhone 4S & Newer, iPad 4th Generation & Newer, iPod Touch 5th Generation & Newer, etc.
- Compatible with Android Devices (Works with Android 4.3 & Later)
- Works with Samsung Galaxy S4, Note 2, Note 3, HTC 1, Nexus 5, Nexus 7, etc.
- Requires Bluetooth Version 4.0 or Later for Compatibility with Your Device
- Battery Requirements: 2 x 'AAA' Batteries
- Dimensions: 3.15"(L) x 2.35"(W) x 2.96"(H)
- Weight: 4.5 oz (batteries excluded)



## **PHBPBW40BL** Bluetooth SMART Wrist Blood Pressure Monitor with Free Downloadable Health Tracking App and Adjustable Strap, Safe for All Ages (Blue Color)

- Wirelessly Measure and Record Your Blood Pressure
- Accurate, Instant and Reliable Readings
- Easy to Use: Wrap it Around Your Wrist and Press the Button
- Adjustable Strap is Safe and Works for All Ages
- Bluetooth 4.0 Smart Low Energy Technology
- Download the 'Pyle Health' App & Connect with Your Smartphone/Tablet
- The App Keeps Track, Saves and Charts Your Blood Pressure Readings
- Clearly Displays Pulse Rate, Systolic and Diastolic Pressures
- Simple Button Operation and One Touch Inflation
- Store and View up to 99 Blood Pressure Readings Per User
- Easy to Read Digital LCD Display
- Auto Turn Off Power Saving Feature & Low Battery Indicator
- The 'Pyle Health' Free Downloadable App:
- Compatible with Apple iPhones, iPads & iPods (Works with iOS 6 & Later)
- Works with iPhone 4S & Newer, iPad 4th Generation & Newer, iPod Touch 5th Generation & Newer, etc.
- Compatible with Android Devices (Works with Android 4.3 & Later)
- Works with Samsung Galaxy S4, Note 2, Note 3, HTC 1, Nexus 5, Nexus 7, etc.
- Requires Bluetooth Version 4.0 or Later for Compatibility with Your Device
- Battery Requirements: 2 x 'AAA' Batteries
- Dimensions: 3.15" (L) x 2.35"(W) x 2.96" (H)
- Weight: 4.5 oz (batteries excluded)





## **PHBPPBW40PN** *Bluetooth SMART Wrist Blood Pressure Monitor with Free Downloadable Health Tracking App and Adjustable Strap, Safe for All Ages (Pink Color)*

- Wirelessly Measure and Record Your Blood Pressure
- Accurate, Instant and Reliable Readings
- Easy to Use: Wrap it Around Your Wrist and Press the Button
- Adjustable Strap is Safe and Works for All Ages
- Bluetooth 4.0 Smart Low Energy Technology
- Download the 'Pyle Health' App & Connect with Your Smartphone/Tablet
- The App Keeps Track, Saves and Charts Your Blood Pressure Readings
- Clearly Displays Pulse Rate, Systolic and Diastolic Pressures
- Simple Button Operation and One Touch Inflation
- Store and View up to 99 Blood Pressure Readings Per User
- Easy to Read Digital LCD Display
- Auto Turn Off Power Saving Feature & Low Battery Indicator
- The 'Pyle Health' Free Downloadable App:
- Compatible with Apple iPhones, iPads & iPods (Works with iOS 6 & Later)
- Works with iPhone 4S & Newer, iPad 4th Generation & Newer, iPod Touch 5th Generation & Newer, etc.
- Compatible with Android Devices (Works with Android 4.3 & Later)
- Works with Samsung Galaxy S4, Note 2, Note 3, HTC 1, Nexus 5, Nexus 7, etc.
- Requires Bluetooth Version 4.0 or Later for Compatibility with Your Device
- Battery Requirements: 2 x 'AAA' Batteries
- Dimensions: 3.15" (L) x 2.35" (W) x 2.96" (H)
- Weight: 4.5 oz (batteries excluded)



## **PHTM10BTBL** *Bluetooth Infrared Ear Thermometer with Digital LCD Display Readout*

- Quickly and Easily Displays Body Temperature
- Download the 'Pyle Health'™ Application and Connect via Bluetooth
- Uses Infrared Technology for Accurate Readings
- Designed for Measuring Body Temperature through the Eardrum
- Safe for Children and Adult Use
- Built-in Memory Function That Saves Last 8 Readings
- Easy to Read Digital LCD Display Readout
- Battery Saving: Automatically Turns Off 60 Seconds of Non-Use
- Degrees Switchable Between Celsius and Fahrenheit
- Battery Required: 2 x 'AAA' Batteries
- Dimensions: 5.8" x 1.4" x 1.2" inch
- Weight: 1.73 oz. (without batteries)
- Health™ Thermometer App: Free to Download
- Bluetooth Wireless Data Transfer
- Save Your Temperature Readings into the App
- View Your History and Recall Temperatures from Past Days
- Integrated Calendar and Chart System Help you Keep Track
- Easily Send & Share Your Data with Family, Friends or Doctor
- Works with iPhones and iPads (Compatible with iOS 6 & Later)
- Also Works with Androids (Compatible with Android 4.3 & Later)
- Bluetooth 4.0 (Compatible with Devices Bluetooth V4.0 & Later)



## **PHTM10BTGR** *Bluetooth Infrared Ear Thermometer with Digital LCD Display Readout*

- Quickly and Easily Displays Body Temperature
- Download the 'Pyle Health'™ Application and Connect via Bluetooth
- Uses Infrared Technology for Accurate Readings
- Designed for Measuring Body Temperature through the Eardrum
- Safe for Children and Adult Use
- Built-in Memory Function That Saves Last 8 Readings
- Easy to Read Digital LCD Display Readout
- Battery Saving: Automatically Turns Off 60 Seconds of Non-Use
- Degrees Switchable Between Celsius and Fahrenheit
- Battery Required: 2 x 'AAA' Batteries
- Dimensions: 5.8" x 1.4" x 1.2" inch
- Weight: 1.73 oz. (without batteries)
- Health™ Thermometer App: Free to Download
- Bluetooth Wireless Data Transfer
- Save Your Temperature Readings into the App
- View Your History and Recall Temperatures from Past Days
- Integrated Calendar and Chart System Help you Keep Track
- Easily Send & Share Your Data with Family, Friends or Doctor
- Works with iPhones and iPads (Compatible with iOS 6 & Later)
- Also Works with Androids (Compatible with Android 4.3 & Later)
- Bluetooth 4.0 (Compatible with Devices Bluetooth V4.0 & Later)



## **PHTM10BTPN** *Bluetooth Infrared Ear Thermometer with Digital LCD Display Readout*

- Quickly and Easily Displays Body Temperature
- Download the 'Pyle Health'™ Application and Connect via Bluetooth
- Uses Infrared Technology for Accurate Readings
- Designed for Measuring Body Temperature through the Eardrum
- Safe for Children and Adult Use
- Built-in Memory Function That Saves Last 8 Readings
- Easy to Read Digital LCD Display Readout
- Battery Saving: Automatically Turns Off 60 Seconds of Non-Use
- Degrees Switchable Between Celsius and Fahrenheit
- Battery Required: 2 x 'AAA' Batteries
- Dimensions: 5.8" x 1.4" x 1.2" inch
- Weight: 1.73 oz. (without batteries)
- Health™ Thermometer App: Free to Download
- Bluetooth Wireless Data Transfer
- Save Your Temperature Readings into the App
- View Your History and Recall Temperatures from Past Days
- Integrated Calendar and Chart System Help you Keep Track
- Easily Send & Share Your Data with Family, Friends or Doctor
- Works with iPhones and iPads (Compatible with iOS 6 & Later)
- Also Works with Androids (Compatible with Android 4.3 & Later)
- Bluetooth 4.0 (Compatible with Devices Bluetooth V4.0 & Later)



### ***PHTM20BTBL*** Bluetooth Infrared Ear & Body Digital Thermometer with Downloadable 'Pyle Health' Application, LCD Display and Safe for All Ages

- Quickly and Easily Displays Body Temperature
- Download the €Pyle Health™ Application and Connect via Bluetooth
- Uses Infrared Technology for Accurate Readings
- Can be Used in Ear Cavity or On the Forehead
- Safe for All Ages: Infant, Child and Adult
- Built-in Memory Function That Saves Last 10 Readings
- Easy to Read Digital LCD Display Readout
- Battery Saving: Automatically Turns Off 60 Seconds of Non-Use
- Choose Between Celsius and Fahrenheit Measurements
- Battery Required: (CR2032) 3V Battery<lib>The €Pyle Health™ Thermometer App: Free to Download
- Bluetooth Wireless Data Transfer
- Save Your Temperature Readings into the App
- View Your History and Recall Temperatures from Past Days
- Integrated Calendar and Chart System Help you Keep Track
- Easily Send & Share Your Data with Family, Friends or Doctor
- Works with iPhones and iPads (Compatible with iOS 6 & Later)
- Also Works with Androids (Compatible with Android 4.3 & Later)
- Bluetooth 4.0 (Compatible with Devices Bluetooth V4.0 & Later)



### ***PHTM20BTGR*** Bluetooth Infrared Ear & Body Digital Thermometer with Downloadable 'Pyle Health' Application, LCD Display and Safe for All Ages

- Quickly and Easily Displays Body Temperature
- Download the €Pyle Health™ Application and Connect via Bluetooth
- Uses Infrared Technology for Accurate Readings
- Can be Used in Ear Cavity or On the Forehead
- Safe for All Ages: Infant, Child and Adult
- Built-in Memory Function That Saves Last 10 Readings
- Easy to Read Digital LCD Display Readout
- Battery Saving: Automatically Turns Off 60 Seconds of Non-Use
- Choose Between Celsius and Fahrenheit Measurements
- Battery Required: (CR2032) 3V Battery<lib>The €Pyle Health™ Thermometer App: Free to Download
- Bluetooth Wireless Data Transfer
- Save Your Temperature Readings into the App
- View Your History and Recall Temperatures from Past Days
- Integrated Calendar and Chart System Help you Keep Track
- Easily Send & Share Your Data with Family, Friends or Doctor
- Works with iPhones and iPads (Compatible with iOS 6 & Later)
- Also Works with Androids (Compatible with Android 4.3 & Later)
- Bluetooth 4.0 (Compatible with Devices Bluetooth V4.0 & Later)



### ***PHTM20BTPN*** Bluetooth Infrared Ear & Body Digital Thermometer with Downloadable 'Pyle Health' Application, LCD Display and Safe for All Ages

- Quickly and Easily Displays Body Temperature
- Download the €Pyle Health™ Application and Connect via Bluetooth
- Uses Infrared Technology for Accurate Readings
- Can be Used in Ear Cavity or On the Forehead
- Safe for All Ages: Infant, Child and Adult
- Built-in Memory Function That Saves Last 10 Readings
- Easy to Read Digital LCD Display Readout
- Battery Saving: Automatically Turns Off 60 Seconds of Non-Use
- Choose Between Celsius and Fahrenheit Measurements
- Battery Required: (CR2032) 3V Battery<lib>The €Pyle Health™ Thermometer App: Free to Download
- Bluetooth Wireless Data Transfer
- Save Your Temperature Readings into the App
- View Your History and Recall Temperatures from Past Days
- Integrated Calendar and Chart System Help you Keep Track
- Easily Send & Share Your Data with Family, Friends or Doctor
- Works with iPhones and iPads (Compatible with iOS 6 & Later)
- Also Works with Androids (Compatible with Android 4.3 & Later)
- Bluetooth 4.0 (Compatible with Devices Bluetooth V4.0 & Later)



### ***PHTM60BTBL*** Bluetooth Non-Contact Infrared Handheld Thermometer with Digital LCD Display Readout

- Quickly and Easily Displays Body or Surface Area Temperature
- Download the €Pyle Health™ Application and Connect via Bluetooth
- Uses Infrared Technology for Accurate Readings
- Measures Body Temperature and Surface Temperature of Objects
- Safe for All Ages Including Children and Babies
- Built-in Memory Function That Saves Past 50 Readings
- Easy to Read Digital LCD Display
- Battery Saving: Automatically Turns Off 60 Seconds of Non-Use
- Degrees Switchable Between Celsius and Fahrenheit
- Battery Required: 2 x 'AAA' Batteries
- Dimensions: 6.3" Å— 3.4" Å— 1.5" inch
- Weight: 3.2 oz. (Not including batteries)<br>The €Pyle Health™ Thermometer App: Free to Download
- Bluetooth Wireless Data Transfer
- Save Your Temperature Readings into the App
- View Your History and Recall Temperatures from Past Days
- Integrated Calendar and Chart System Help you Keep Track
- Easily Send & Share Your Data with Family, Friends or Doctor
- Works with iPhones and iPads (Compatible with iOS 6 & Later)
- Also Works with Androids (Compatible with Android 4.3 & Later)
- Bluetooth 4.0 (Compatible with Devices Bluetooth V4.0 & Later)



## **PHTM60BTGR** Bluetooth Non-Contact Infrared Handheld Thermometer with Digital LCD Display Readout

- Quickly and Easily Displays Body or Surface Area Temperature
- Download the Pyle Health™ Application and Connect via Bluetooth
- Uses Infrared Technology for Accurate Readings
- Measures Body Temperature and Surface Temperature of Objects
- Safe for All Ages Including Children and Babies
- Built-in Memory Function That Saves Past 50 Readings
- Easy to Read Digital LCD Display
- Battery Saving: Automatically Turns Off 60 Seconds of Non-Use
- Degrees Switchable Between Celsius and Fahrenheit
- Battery Required: 2 x 'AAA' Batteries
- Dimensions: 6.3" Å— 3.4" Å— 1.5" inch
- Weight: 3.2 oz. (Not including batteries)

- Pyle Health™ Thermometer App: Free to Download
- Bluetooth Wireless Data Transfer
- Save Your Temperature Readings into the App
- View Your History and Recall Temperatures from Past Days
- Integrated Calendar and Chart System Help you Keep Track
- Easily Send & Share Your Data with Family, Friends or Doctor
- Works with iPhones and iPads (Compatible with iOS 6 & Later)
- Also Works with Androids (Compatible with Android 4.3 & Later)
- Bluetooth 4.0 (Compatible with Devices Bluetooth V4.0 & Later)



## **PSTHH05** Handheld Birdie Steam Cleaner

- Naturally Cleans with Hot Steam Vapor
- Deodorizes and Sanitizes While you Clean
- Quickly Disinfects - Removes Dirt & Grime
- Produces Superheated Steam
- Lightweight, Portable and Easy to Use
- Tested to Kill 99.9% of Germs and Bacteria
- Simple Operation Single-Touch Steam Activation
- Uses Tap Water - No Chemicals or Cleaning Solutions Required

- Includes Garment Attachment for Use on Clothing
- Comes with (9) Piece Accessory Kit Including Jet Nozzle Attachment
- Built-in 900 Watt Heating Element
- Perfect for Your Home, Car or Boat
- Power 110V Compatible
- Main Unit Dimensions: 11.6" X 7" X 10.4" inches
- Main Unit Weight: 3.8 lbs.



## **PSTMH02** Handheld Steamer Birdie Steam Cleaner

- Naturally Cleans with Hot Steam Vapor
- Deodorizes and Sanitizes While you Clean
- Quickly Disinfects - Removes Dirt & Grime
- Produces Superheated Steam
- Lightweight, Portable and Easy to Use
- Tested to Kill 99.9% of Germs and Bacteria
- Simple Operation Single-Touch Steam Activation
- Uses Tap Water - No Chemicals or Cleaning Solutions Required

- Includes Garment Attachment for Use on Clothing
- Comes with (9) Piece Accessory Kit Including Jet Nozzle Attachment
- Built-in 800 Watt Heating Element
- Perfect for Your Home, Car or Boat
- Power 110V Compatible
- Dimensions: 9.44" x 5.9" x 8.46"
- Weight: 2.2 lbs



## **PSTMH15** Multi-Purpose & Multi-Surface Steam Cleaner

- Versatile Steam Cleaner for your Home and Clothing
- Anti-Wrinkle: Freshens Garments and Removes Wrinkles & Creases
- Naturally Cleans with Hot Steam Vapor
- Deodorizes and Sanitizes While you Clean
- Quickly Disinfects - Removes Dirt & Grime
- Use for Clothing, Furniture, Fabric and More
- Produces Superheated Steam
- Portable and Easy to Use
- Includes Attachable Garment Hanger for Use with Clothing
- Tested to Kill 99.9% of Germs and Bacteria

- Simple Operation Single-Touch Steam Activation
- Uses Tap Water - No Chemicals or Cleaning Solutions Required
- Comes with (15) Piece Accessory Kit Including Jet Nozzle Attachment
- Perfect for Home, Office and Travel
- Built-in 900 Watt Heating Element
- Removable 11oz. Refillable Water Tank
- Power 110V Compatible
- Main Unit Dimensions: 11.6" x 10.7" x 6.4" inches
- Main Unit Weight: 3.4 lbs.
- Complete Unit Weight: 8.1 lbs



## **PSTMP20** 2-in-1 Steam Floor Mop & Detachable Handheld Steamer

- Hybrid Steamer: 2 Steamers in 1
- Handheld Steamer Detaches from Mop to Clean Your Entire Home
- Naturally Cleans with Hot Steam Vapor
- Includes Extension Hose for Handheld Steamer
- Deodorizes and Sanitizes While you Clean
- Works on All Sealed Hard Floor Surfaces
- Quickly Sanitizes and Disinfects Clothing, Furniture, Fabric and More
- Produces Superheated Steam
- Simple Operation Single-Touch Steam Activation

- Triangular Mop Design for Easy Cleaning in Tight Corners
- Includes Heavy-Duty Microfiber Cleaning Pads
- Tested to Kill 99.9% of Germs and Bacteria
- Uses Tap Water - No Chemicals or Cleaning Solutions Required
- Removable 16 oz. Refillable Water Tank
- Built-in 1500 Watt Heating Element
- Perfect for Your Home, Car or Boat
- Power 110V Compatible
- Main Unit Dimensions: 10.6" x 8.7" x 47.2" inches
- Main Unit Weight: 5.3 lbs.





For more detailed specifications, product-specific information and models visit

[PyleAudio.com](http://PyleAudio.com)

**PYLE®**